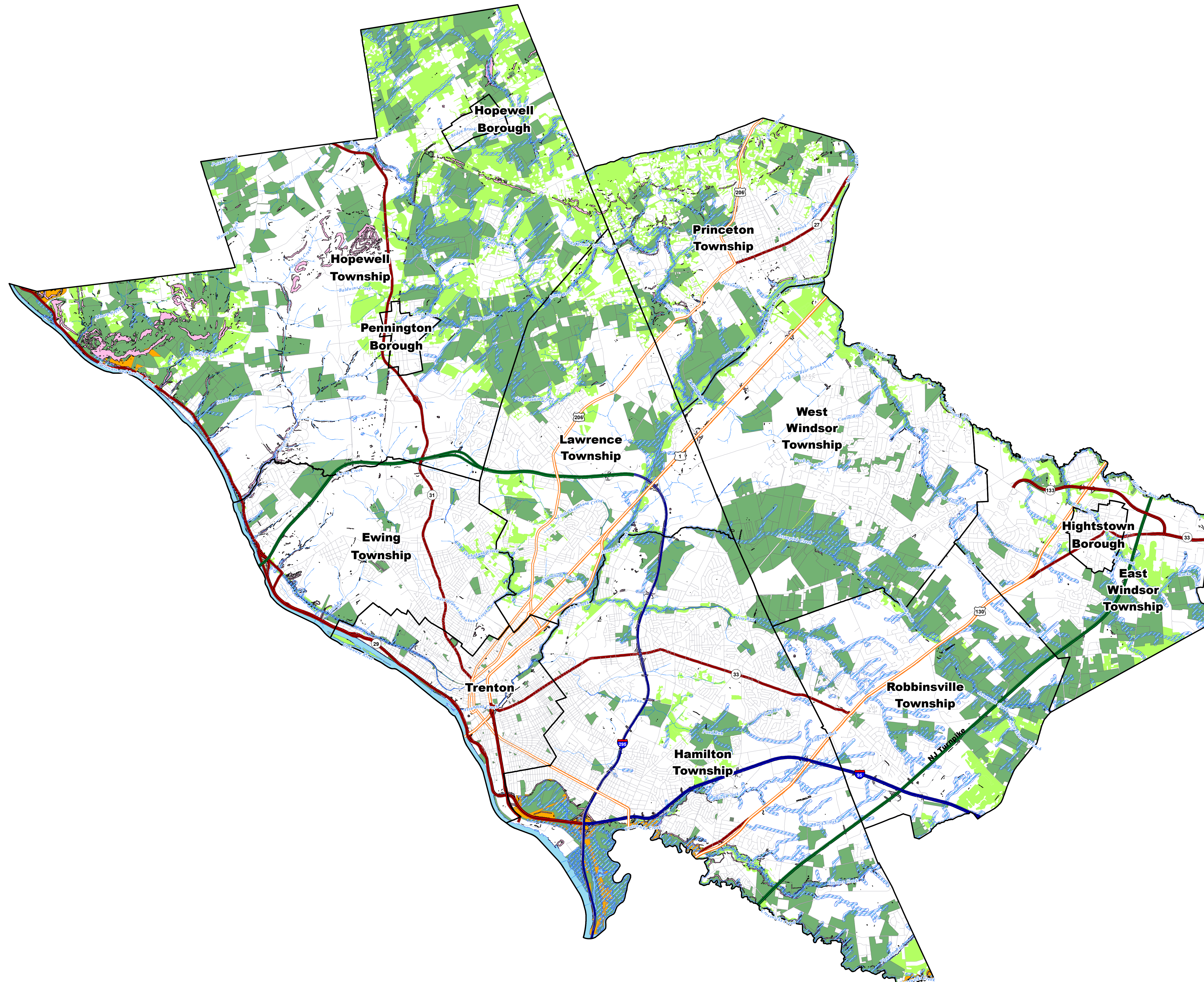


Mercer County Wastewater Management Plan

June 2012 Revised: February 28, 2013; August 30, 2013

Map 5B Environmental Features Natural Resources



- Municipal Boundary
- Local Road
- Hydrologic Feature (River, Stream, Creek)
- Hydrologic Feature (Lake, Reservoir, Major River)
- 150 ft. Buffer (Riparian Corridor or Acidic Soil)
- Steep Slope > 20%
- Public Open Space and Preserved Agriculture
- Natural Heritage Site
- Landscape Data Version 2.1

Data Sources:

Slope: Mercer County HydroEnforced 1 meter DEM derived from high accuracy LIDAR

Natural Heritage Priority Site: Developed by NJDEP, Office of Natural Lands Management

Landscape Data: Landscape Project Version 2.1 (Rank 3,4,5)
Developed by NJDEP, Division of Fish and Wildlife, Endangered Nongame Species Program
Dipict area of:
Bald Eagle Foraging
Emergent Wetland
Forest
Forested Wetlands
Grassland
Wood Turtle

Public Open Space and Preserved Agriculture: Mercer County, Planning Division
Dated: January 2011

