

ALTERNATIVES ANALYSIS & MASTER PLAN FOR

Moore's Station Quarry Rehabilitation & Park Development

Mercer County Park Commission



Preliminary Concept Alternatives

Public Meeting 2

02.23.2021

Agenda

1. INTRODUCTIONS – ANTHONY CUCCHI
2. PROJECT TEAM & APPROACH
3. EXISTING CONDITIONS REVIEW & SPATIAL ANALYSIS
4. PUBLIC MEETING #1 REVIEW
5. DESIGN APPROACH
6. PROGRAM ELEMENTS
7. PROJECT CONCEPTS
8. NEXT STEPS
9. DISCUSSION



Welcome and Thank You for Attending!



County Steering Committee

AARON WATSON	EXECUTIVE DIRECTOR, MCPC
LESLIE FLOYD	PLANNING DIRECTOR
JOE PIZZA	DEPUTY DIRECTOR, MCPC
LISA FRITZINGER	ASSISTANT PLANNING DIRECTOR
ANTHONY CUCCHI	SUPERINTENDENT OF PARKS, MCPC
JENN ROGERS	DIRECTOR OF STEWARDSHIP, MCPC
EMILY BLACKMAN	SENIOR PLANNER



Moores Station Quarry Rehabilitation
&
Park Development

Project Team & Scope of Work

SIMONE COLLINS LANDSCAPE ARCHITECTURE

Landscape Architects / Planners - team leader will facilitate overall Vision, Design, Planning and Community Participation

GANNETT FLEMING

Multidisciplinary Engineering Firm for: Mining / Reclamation; Geology / Geotechnical, Civil / Stormwater, Structural, and permitting expertise.

APPLIED ECOLOGICAL SERVICES

Science driven consulting, design and environmental reclamation & contracting firm will undertake the site Ecological Assessment and collaborate on rehabilitation recommendations.

RE:VISION ARCHITECTURE

Uber green firm serving as sustainability & architectural consultant

4WARD PLANNING

Economic Planner / Market Analyst will assess the recreational marketplace and develop revenue and cost recovery analysis

Moores Station Quarry Rehabilitation
&
Park Development

Project Team Professionals

SIMONE COLLINS LANDSCAPE ARCHITECTURE Peter Simone, Sarah Leeper, Melissa Barley

GANNETT FLEMING Michael Knight, Andrew Smithmyer, Eric Neast

APPLIED ECOLOGICAL SERVICES Michael McGraw, Jessie Buckner

RE:VISION ARCHITECTURE Scott Kelly, Drew Lavine

4WARD PLANNING Todd Poole, Susan Crowell-Berigan

Moores Station Quarry Rehabilitation
&
Park Development

What is a Master Plan?

- 1 Public Opinion Survey
- 3 Baldpate Partners Meetings
- 4 Public Meetings
- 5 Steering Committee Meetings
- 15 Key Person Interviews



“All voices heard, all ideas honored”

Project Process

Alternatives Analysis & Master Plan for Moore's Station Quarry Restoration & Park Development

PROJECT SCOPE & SCHEDULE



Project Process

Alternatives Analysis & Master Plan for Moore's Station Quarry Restoration & Park Development

PROJECT SCOPE & SCHEDULE



Moore's Station Quarry Rehabilitation
&
Park Development

Project Meetings

MEETING	PURPOSE	DATE	TIME
Steering Committee #1	Project Startup	June	
County Administration	Project Background & Process Review	August	
Baldpate Partners (BP) Project Update Meeting #1- DEP, Hopewell Township, & FOHVOS	Project Background & Process Review	October	
Steering Committee #2	Project Update: Inventory & Analysis	November	
Public Meeting #1	Project Background & Brainstorming	Tuesday Dec 2, 2020	7:00 -9:00 PM
Steering Committee #3	Initial Concept Review	February	
Public Meeting #2	Preliminary Concept Alternatives	Tuesday, Feb 23, 2021	6:00 – 8:00 PM
BP Project Update Meeting #2	Preliminary Concept Alternatives	March	
Steering Committee #4	Draft Plan Review	April	
Public Meeting #3	Draft Plan Presentation	Tuesday, May 18, 2021	6:00 – 8:00 PM
60-day draft plan review		June – July	
BP Project Update Meeting #3	Draft Plan Review	June/July	
Steering Committee #5	Final Plan Refinements	September	
Public Meeting #4	Final Plan Presentation	Tuesday, October 12	6:00 – 8:00 PM

Existing Conditions



Moores Station Quarry Rehabilitation
&
Park Development



Existing Site

Quarry Fly Through Video



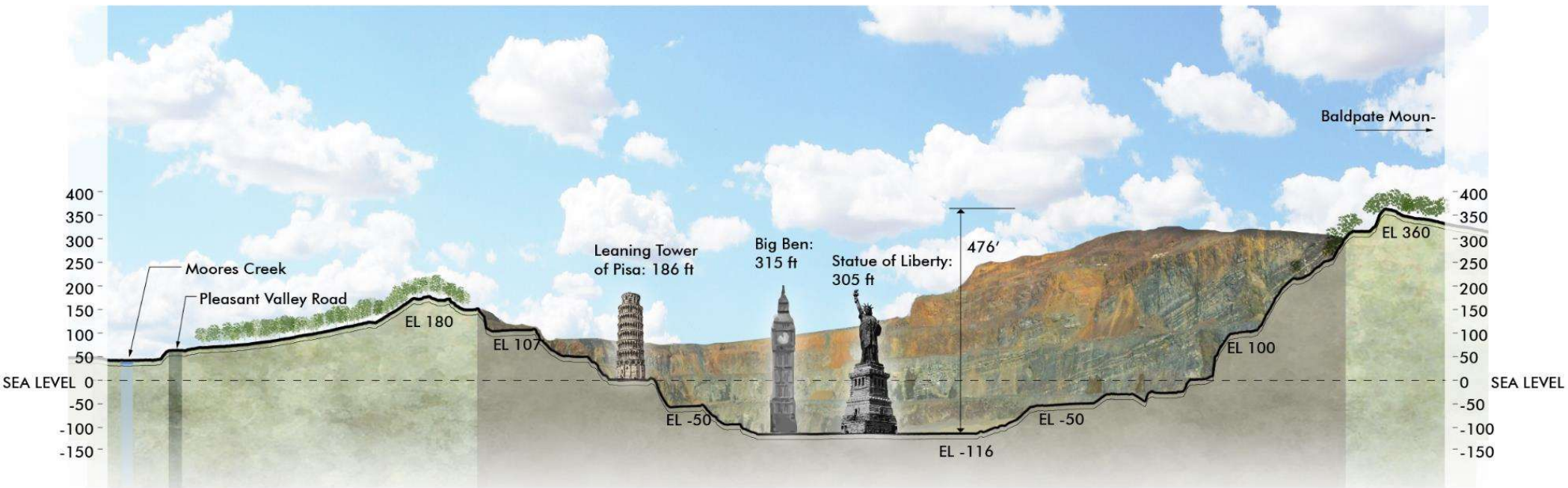
Moores Station Quarry Rehabilitation
&
Park Development

Site Photos



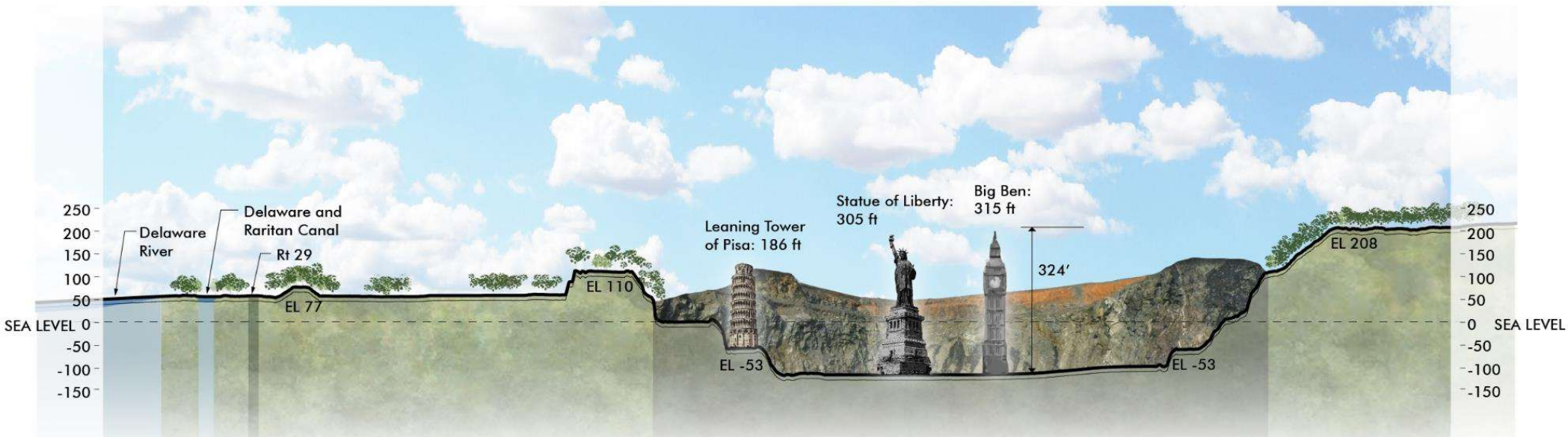
Spatial Studies

Quarry Section – North to South Looking East



Spatial Studies

Quarry Section – West to East Looking North



Work Tasks – Completed or On-Going

- **SITE RECONNAISSANCE VISITS**
- **BASE INFORMATION**
 - DRONE SURVEY, FIELD WORK, PRELIMINARY STABILITY EVALUATION
- **SITE ANALYSIS**
 - SITE ACCESS (VEHICULAR ACCESS, TRAIL ACCESS, EMERGENCY ACCESS, UTILITY ACCESS)
 - SLOPE, SUN/SHADE, HYDROLOGY, CIRCULATION, SPATIAL ANALYSIS
 - REVIEW OPTIMAL STRUCTURE LOCATIONS
 - IDENTIFY KEY PERSON INTERVIEWS
- **ECOLOGICAL & HABITAT REHABILITATION ANALYSIS – ON GOING**
 - PLANT COMMUNITIES INVENTORY
 - WILDLIFE SURVEY AND HABITAT ANALYSIS
 - MICROCLIMATE ANALYSIS
- **MARKET GAP STUDY – KEY TAKE-AWAYS**
 - RETAIN A SENSE OF HISTORY, PLACE, AND COMMUNITY.
 - OFFER ELEMENTS OF WATER, LAND, AND SKY TO A DIVERSITY OF VISITORS.
 - VARIETY OF FACILITIES WILL APPEAL TO A DIVERSE DEMOGRAPHIC & USER GROUPS



Moors Station Quarry Rehabilitation
&
Park Development

Public Meeting #1



Moore's Station Quarry Rehabilitation
&
Park Development

Public Feedback Summary and Discussion Points

PUBLIC MEETING 1 (DECEMBER 2, 2020) - 110 TOTAL ATTENDEES:

- CONSIDER STUDENT FIELD TRIPS (RESTORATION, GEOLOGY, ECOLOGY, SITE MINING HISTORY ETC.);
- MAINTAIN A FUTURE POND(S) & MAINTAIN CLEAN STORMWATER RUNOFF INTO MOORE'S CREEK;
- MANAGE INVASIVE SPECIES;
- CREATE A POSITIVE CONTRIBUTION TO REGIONAL ECOLOGY;
- ALLOW VISITORS TO OBSERVE FLORA AND FAUNA IN AN ECOLOGICALLY SENSITIVE WAY;
- ADD TRAIL CONNECTIONS TO TED STILES PRESERVE AT BALDPATE MOUNTAIN;
- MAINTAIN FREE PUBLIC ACCESS WITH POTENTIAL PAID PROGRAMS/EVENTS.
- CONSIDER SUGGESTIONS FOR AN AMPHITHEATER, MOUNTAIN BIKE TRAILS, ROCK CLIMBING, CAMPING, GARDENS, ARBORETUM, WETLAND RESTORATION, NATURE CENTER, SWIMMING;

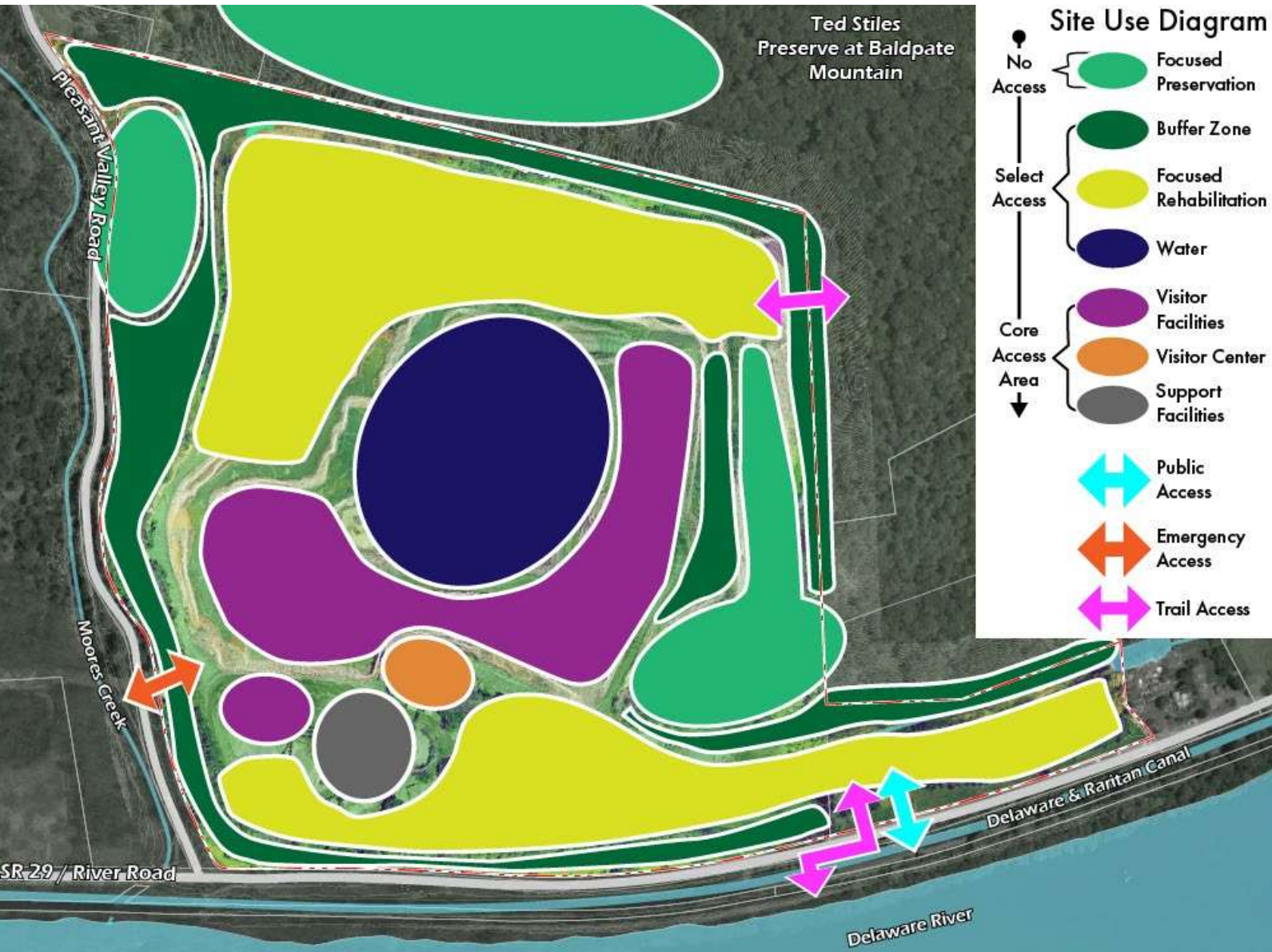
THE PROJECT TEAM HAS RECEIVED CORRESPONDENCE FROM BIRDING, MOUNTAIN BIKING, AND HISTORICAL RESOURCE GROUPS.

Moore's Station Quarry Rehabilitation
&
Park Development

Design Approach



Moores Station Quarry Rehabilitation
&
Park Development



Functional Relationships Diagram

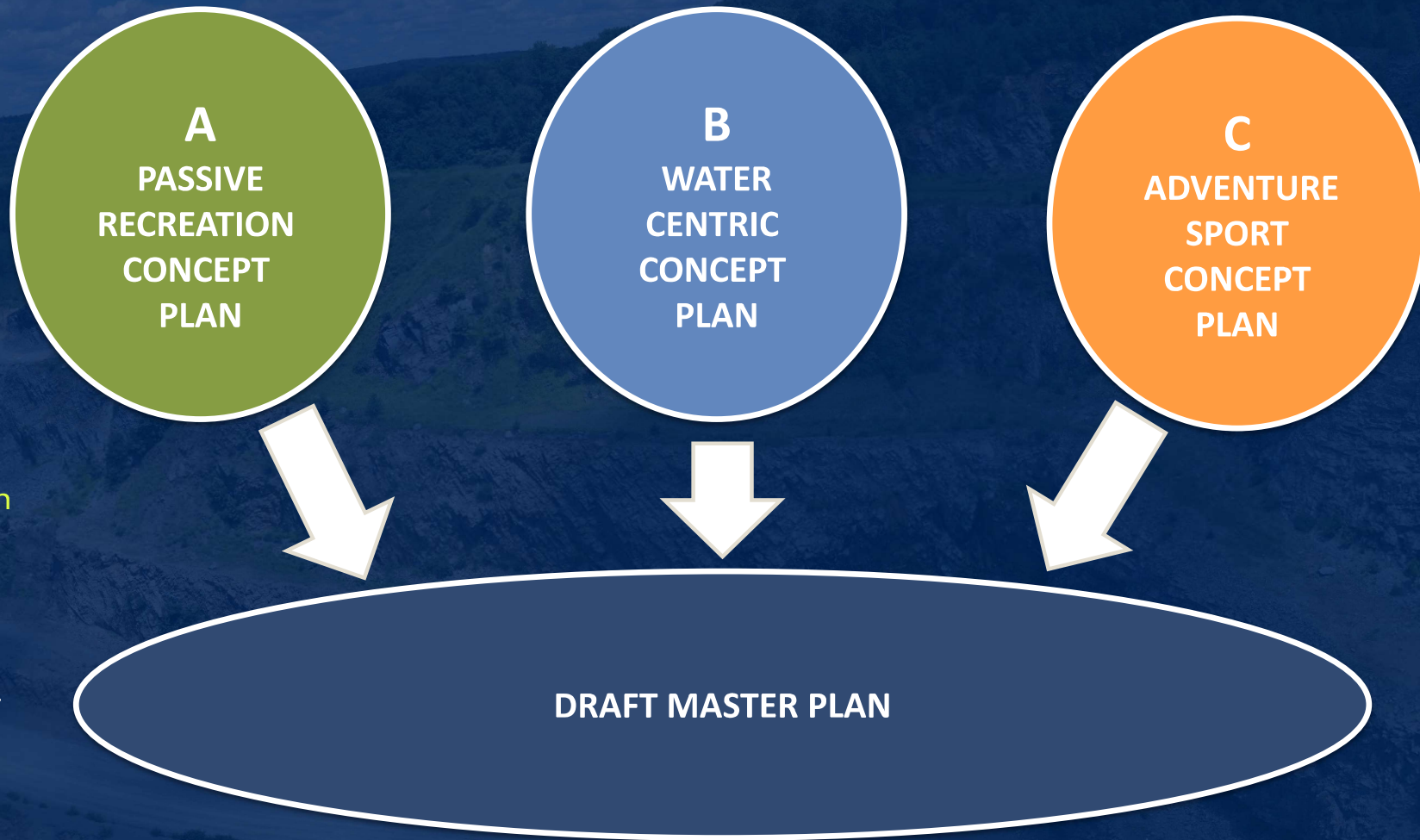
How use areas generally relate to one another

- Establish no access preservation areas
- Provide buffers
- Focus visitor facilities on Route 29 side of Quarry
- Explore relationships between uses
- Identify access & connections

Design Approach

PROGRAM REFINEMENT

- Three concepts are a way to explore ideas
- The draft master plan will likely include elements from each concept
- Not all program elements will make it into the final design



Program Elements



Moores Station Quarry Rehabilitation
&
Park Development

Program Elements

REHABILITATION

- Primary goal is to rehabilitate the site.
- Turn rock into green & blue
- Habitat Opportunities:
 - Lithic / cliff habitat
 - Meadows
 - Shrubland
 - Stream & wetland
 - Forestation
- Final design of habitat types will be informed by surrounding flora and fauna and ecological inventories.



Program Elements

REHABILITATION

- Establish healthy viable primary successional plant community such as open meadow.
- Determine size and locations of open water areas.



Program Elements

REHABILITATION

- Target and manage plantings to develop desirable end plant communities such as forest, savannah, and shrubland.



Program Elements

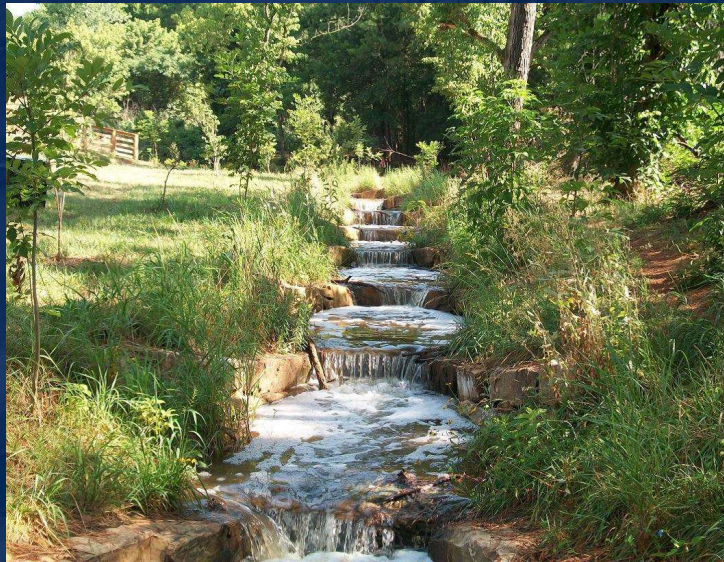
REHABILITATION

- Locate and determine program elements that support stewardship goals throughout the site.



Program Elements

HABITAT PRESERVATION & ENHANCEMENT



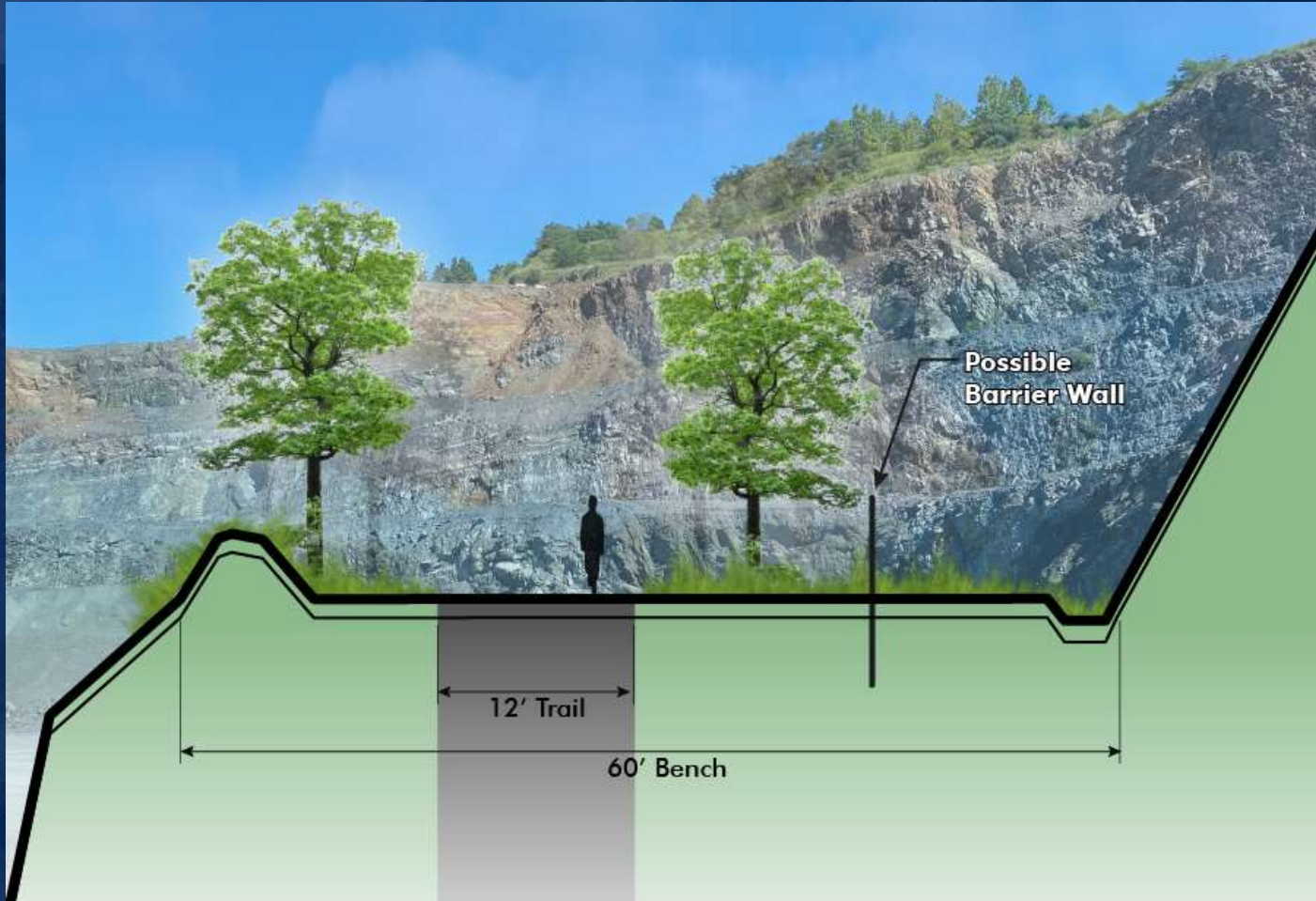
Program Elements

TRAILS

- Multi-Use ADA
- Asphalt
- Stone dust
- Hiking
- Single Track Hiking
- Mown Meadow



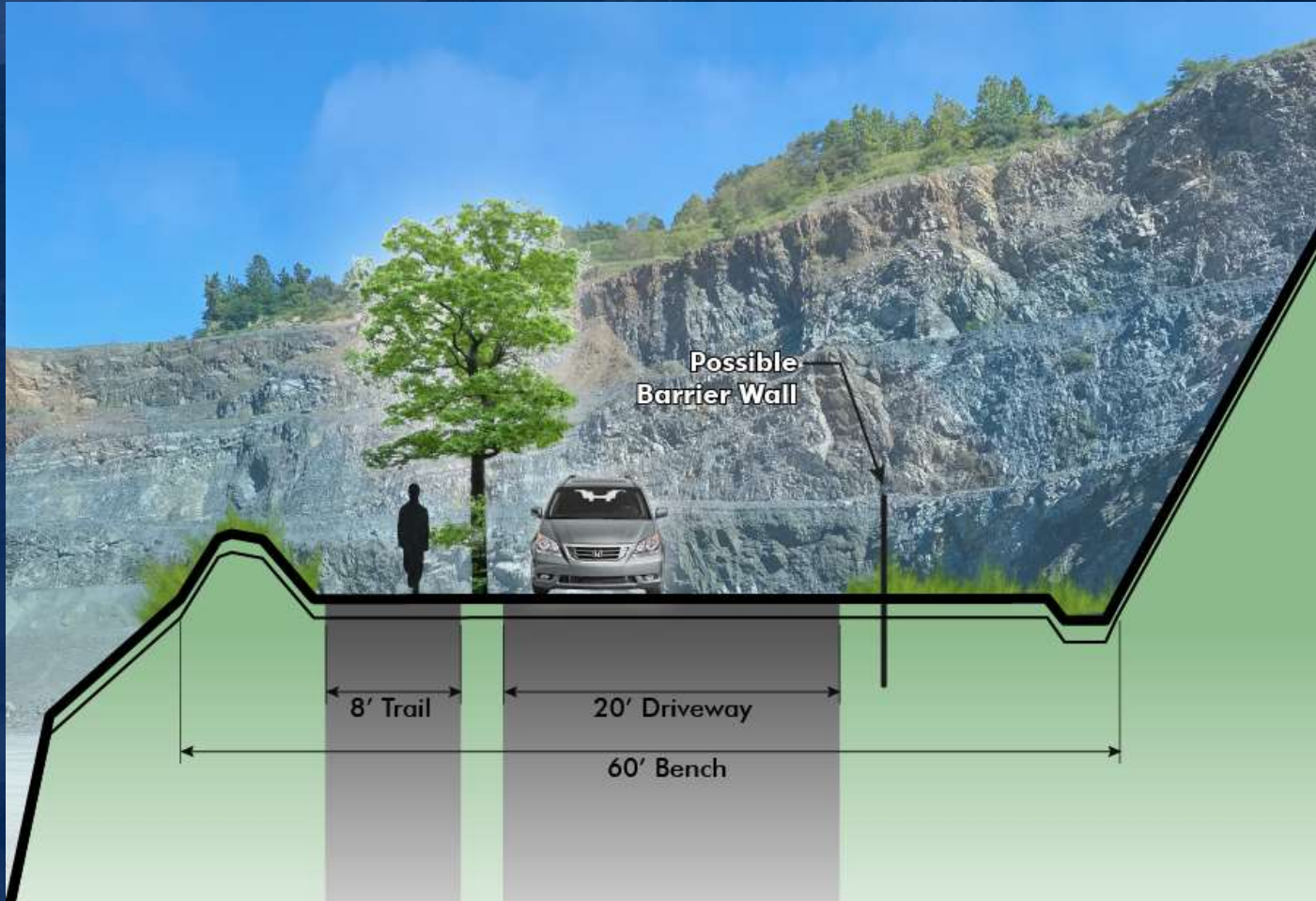
Program Elements



Quarry Bench Section Trail

Moores Station Quarry Rehabilitation
&
Park Development

Program Elements



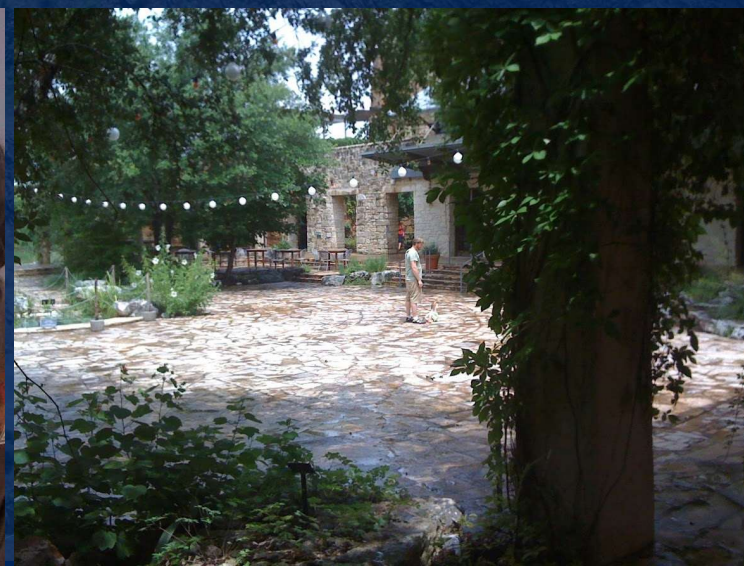
Quarry Bench Section Trail / Driveway

Moores Station Quarry Rehabilitation
&
Park Development

Program Elements

VISITOR CENTER

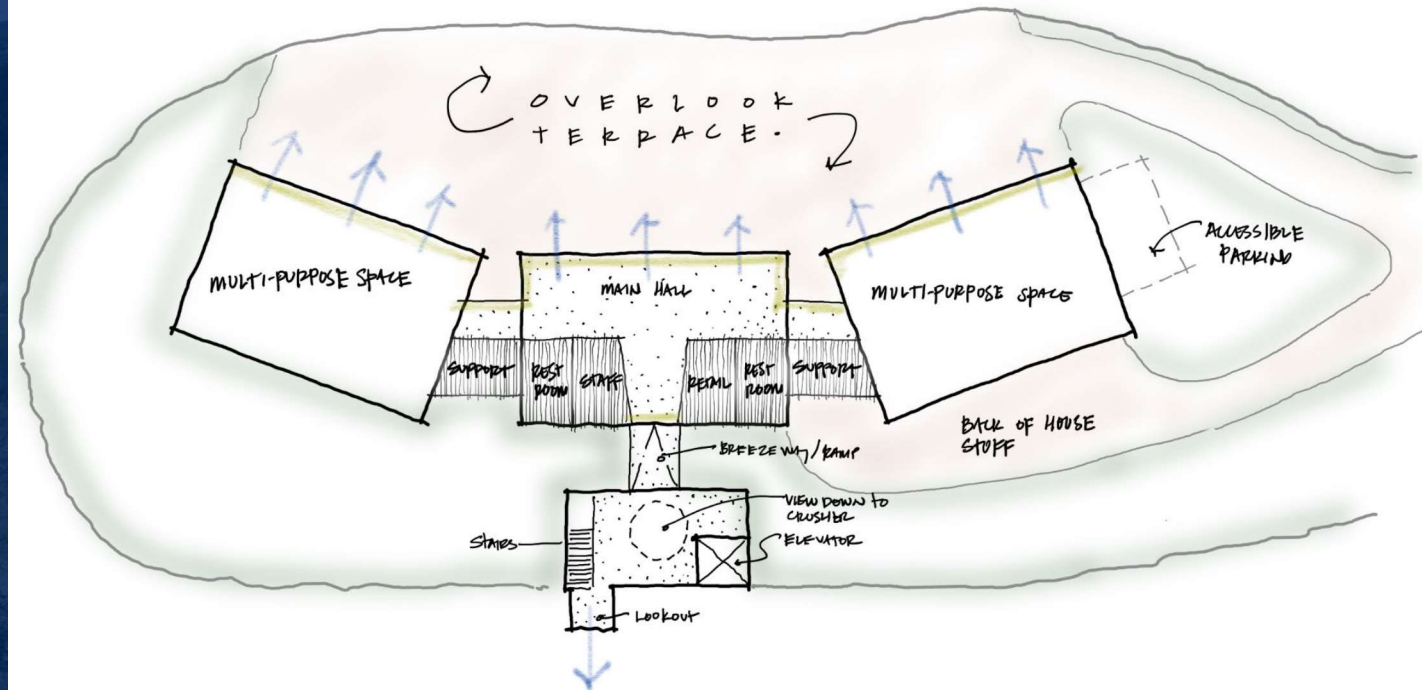
- Create an efficient footprint to serve program needs
- Honor sense of place
- Choose materials carefully
- Embrace the outdoor spaces & views



Program Elements

VISITOR CENTER – SCHEMATIC FOOTPRINT

- Central area serves core needs: restrooms, concession/retail, and office space.
- Wings serve as multi-purpose space and necessity would be determined by final program.
- 9,600 square feet of space including top level of the vertical circulation repurposed structure

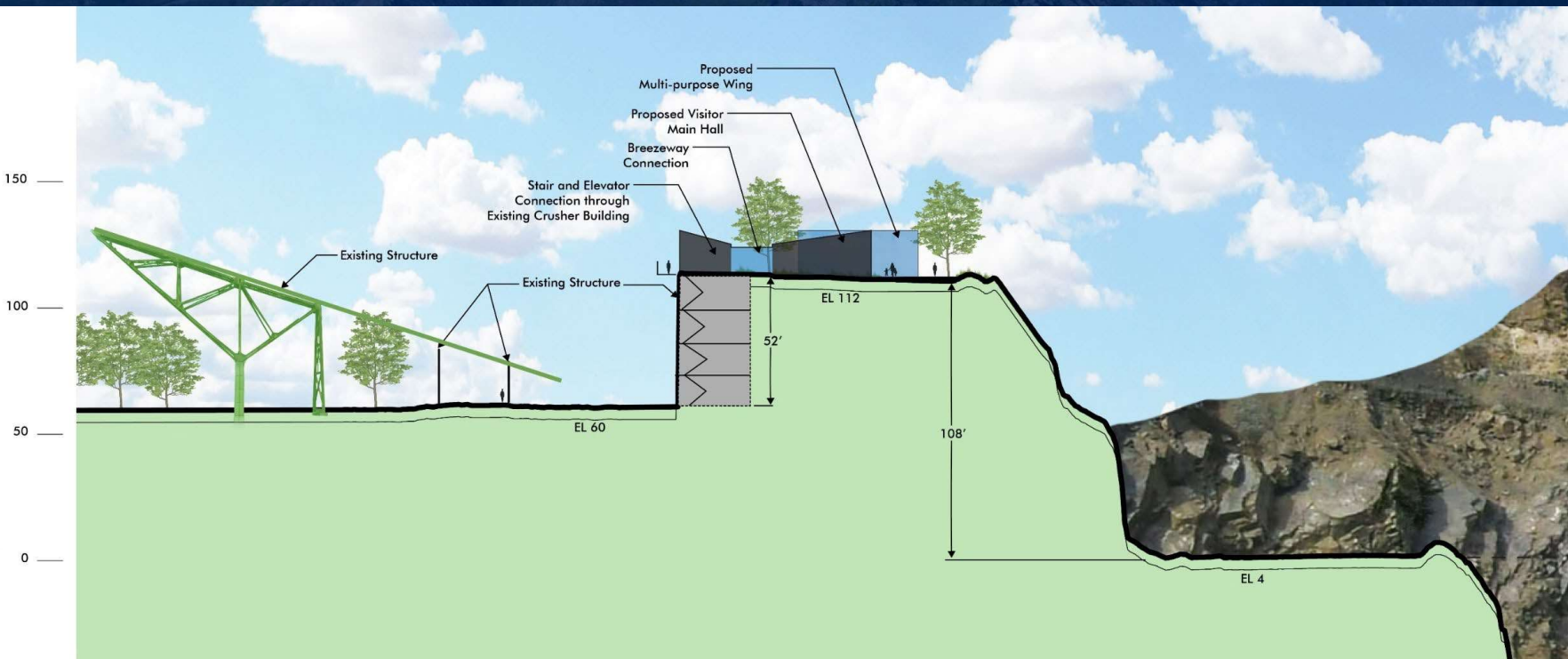


MOORES QUARRY | VISITOR CENTER | 02.18.2021

RE:VISION

Moore's Station Quarry Rehabilitation
&
Park Development

Program Elements



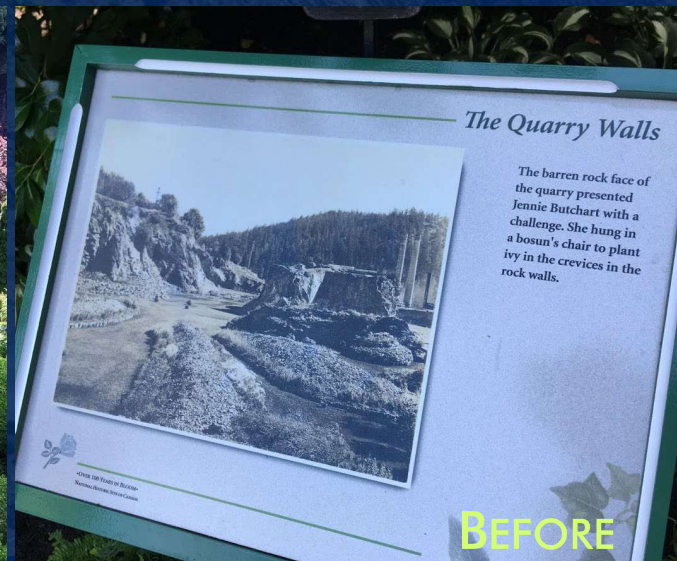
Quarry Section Visitor Center

Program Elements

ARBORETUM /
NATIVE PLANTS
DISPLAY GARDEN



100 YEARS LATER



Program Elements

OVERLOOK

- Safety primary consideration
- No impacts to cliff habitats
- Location to experience drama of the site



Program Elements

FISHING

- Water access
- Foot trails
- Pond Edge Platforms
- ADA access
- Warm-water & Cold-water
- Stock Ponds



Program Elements

PRIMITIVE CAMPING

- Tent only
- Hike-in
- Pack-it-in Pack-it-out /
leave no trace
- No water
- No electricity



Program Elements

GLAMPING

- Tent structure / yurt rental
- Beds
- Seating Area
- Central Restroom Facility
- Water & Electricity



Program Elements

KAYAK TRAINING

- Instructional water course
- Support Facilities:
 - Equipment Rental
 - Launch Area
 - Instruction Areas



Program Elements

FRESHWATER SNORKEL TRAIL

- Guided Tours
- Individual Tours
- Explore shoreline pond habitat
- Mining Artifact / Geology Discovery
- Support Facilities:
 - Equipment Rental
 - Instruction Areas



Moores Station Quarry Rehabilitation
&
Park Development

Program Elements

SCUBA TRAINING

- Certification Training
- Mining Artifact / Geology Discovery
- Support Facilities:
 - Equipment Rental
 - Instruction Areas



(c) Rich Galiano

Moores Station Quarry Rehabilitation
&
Park Development

Program Elements

PLAYGROUND

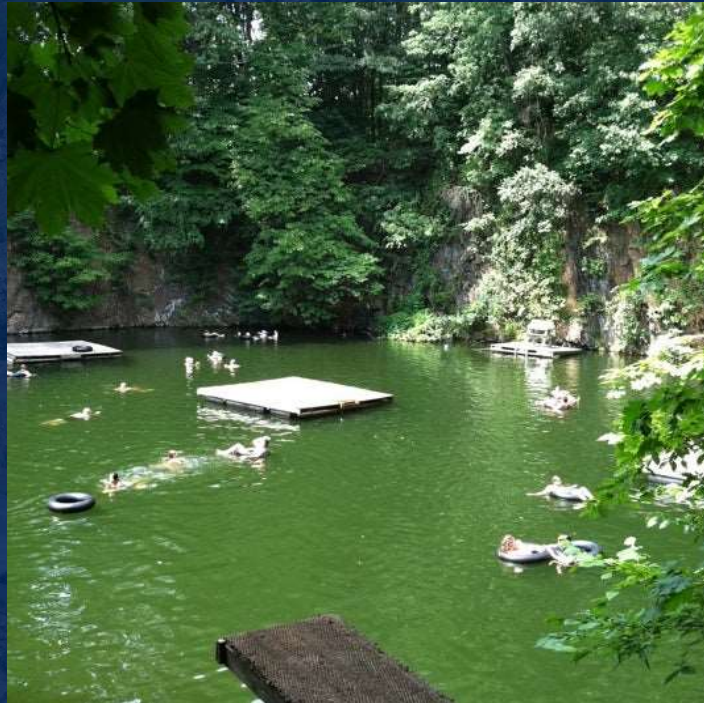
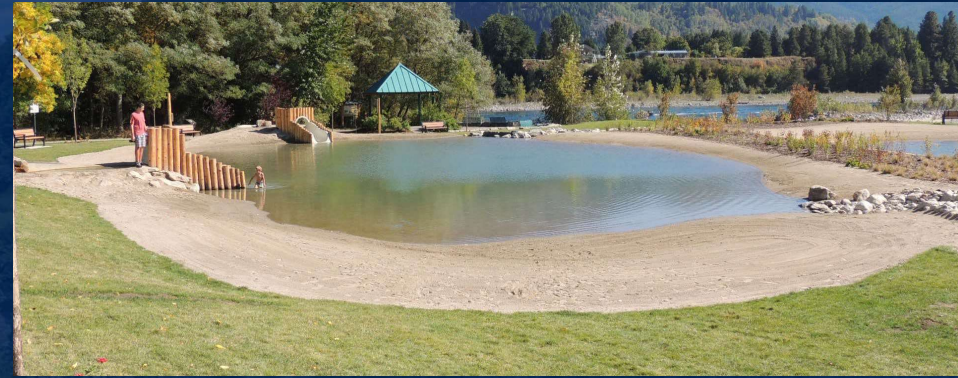
- Include elements from site features
- Bouldering
- Zip line
- Include Natural elements



Program Elements

SWIMMING

- Defined swimming area(s)
- Young swimmer area
- ADA Access
- Diving platforms
- Support Facilities:
 - Changing Rooms & Restrooms
 - ADA parking



Program Elements

SMALL AMPHITHEATER

- 200 to 300-Person Capacity
- Performance Stage
- Support Facilities:
 - Restrooms
 - ADA parking / Access



Program Elements

ROCK CLIMBING

- Individual Routes
- Guided Instructor Routes
- Bouldering Areas
- Support Facilities:
 - Equipment Rental
 - Instruction Areas



Program Elements

CHALLENGE / ROPES COURSE

- High Ropes
- Low Ropes
- Zip Line
- Team Building



Program Elements

MOUNTAIN BIKING

- Some Mountain Biking-only Trails
- Single Track
- Technical Trails
 - Flow trail
 - Boulder garden
 - Beginner Skills



Program Elements

BIKE PUMP TRACK

- Dirt or Paved
- Single Track
- Focus on upper body strength training
- Multiple user groups:
 - Mt. Bike
 - BMX
 - Skate Borders



Program Elements

BMX COMPETITION TRACK

- Starting Blocks / Finish Line
- 12 to 20-foot wide course
- Support Facilities:
 - Spectator Area
 - Restrooms



Site Concepts

- Concept A - Passive Recreation
- Concept B - Water Centric
- Concept C - Adventure Sports



Moore's Station Quarry Rehabilitation
&
Park Development



Existing Quarry



Site Concept A – Passive Recreation

- 1 Visitor Center
- 2 Cliff Habitat Display & Artifact Garden
- 3 Stream Restoration
Outdoor Classroom
- 4 At Grade Crossing of River Rd & Bridge to D&R Canal Trail
- 5 Pond Viewing Platform
- 6 Picnic Area
- 7 Restroom
- 8 Small Amphitheater & Stage
- 9 Fishing Access
- 10 Open Lawn & Pavilion
- 11 Small Overlook (Typical)
- 12 Primitive Camping
- 13 Destination Overlook
- 14 Maintenance Area



Ted Stiles Preserve
at
Baldpate Mountain

Existing Quarry



Site Concept B – Water Centric

- 1 Amphitheater
- 2 Changing Facility & Gathering Lawn
- 3 Beach/Swimming Access
- 4 Picnic Pavilion Rentals
- 5 Glamping & Restroom
- 6 Visitor Center
- 7 Check-in Gatehouse
- 8 Silos Playground & Pavilion
- 9 Artifact Meadow
- 10 At Grade Crossing of River Rd. & Bridge to D&R Canal Trail
- 11 Fishing Access
- 12 Small Overlook (Typical)
- 13 Primitive Camping
- 14 Destination Overlook
- 15 Maintenance Area



Existing Quarry



Site Concept C – Adventure Sports

- 1 Visitor Center
- 2 Rock Climbing
- 3 Zip Line
- 4 Ropes Course
- 5 Playground & Restroom
- 6 Bicycle Pump Track
- 7 BMX Bike Track
- 8 BMX Track Viewing Areas Typical
- 9 Fishing Access
- 10 Boat Rental & Programs Staging Area
- 11 Snorkel Water Trail
- 12 Open Lawn
- 13 Small Overlook (Typical)
- 14 Mt Bike Trails
- 15 Destination Overlook
- 16 River Rd Trail Overpass
- 17 Connection to D&R Canal Trail
- 18 Maintenance Area

Next Steps



Moores Station Quarry Rehabilitation
&
Park Development

Next Steps

FOR YOU:

- Share and review the alternative concepts and presentation on the County website:
<https://www.mercercountyparks.org/#!/about/moores-station-quarry-park-plan>
- Give us feedback via the Online Survey: <https://www.surveymonkey.com/r/MSQ-FEEDBACK>
- Share the survey with your friends and neighbors

The Design Team:

- Review alternative concepts with project partners:
 - Baldpate Partners Meeting
 - Key Person / Agency Interviews
- Review Feedback
- Develop Refined Draft Plan



Moores Station Quarry Rehabilitation
&
Park Development

Next Steps

MEETING	PURPOSE	DATE
Public Meeting #3	Draft Plan Presentation	Tuesday, May 18, 2021
60-day draft plan review		June - July
Public Meeting #4	Final Plan Presentation	Tuesday, October 12 , 2021

SIMONE COLLINS LANDSCAPE ARCHITECTURE:

Phone: 610-239-7601

Peter Simone, Project Principal

Email: PSIMONE@SIMONECOLLINS.COM

Sarah Leeper, Project Manager

Email: SLEEPER@SIMONECOLLINS.COM

Melissa Barley, Staff Landscape Architect

Email: MBARLEY@SIMONCOLLINS.COM

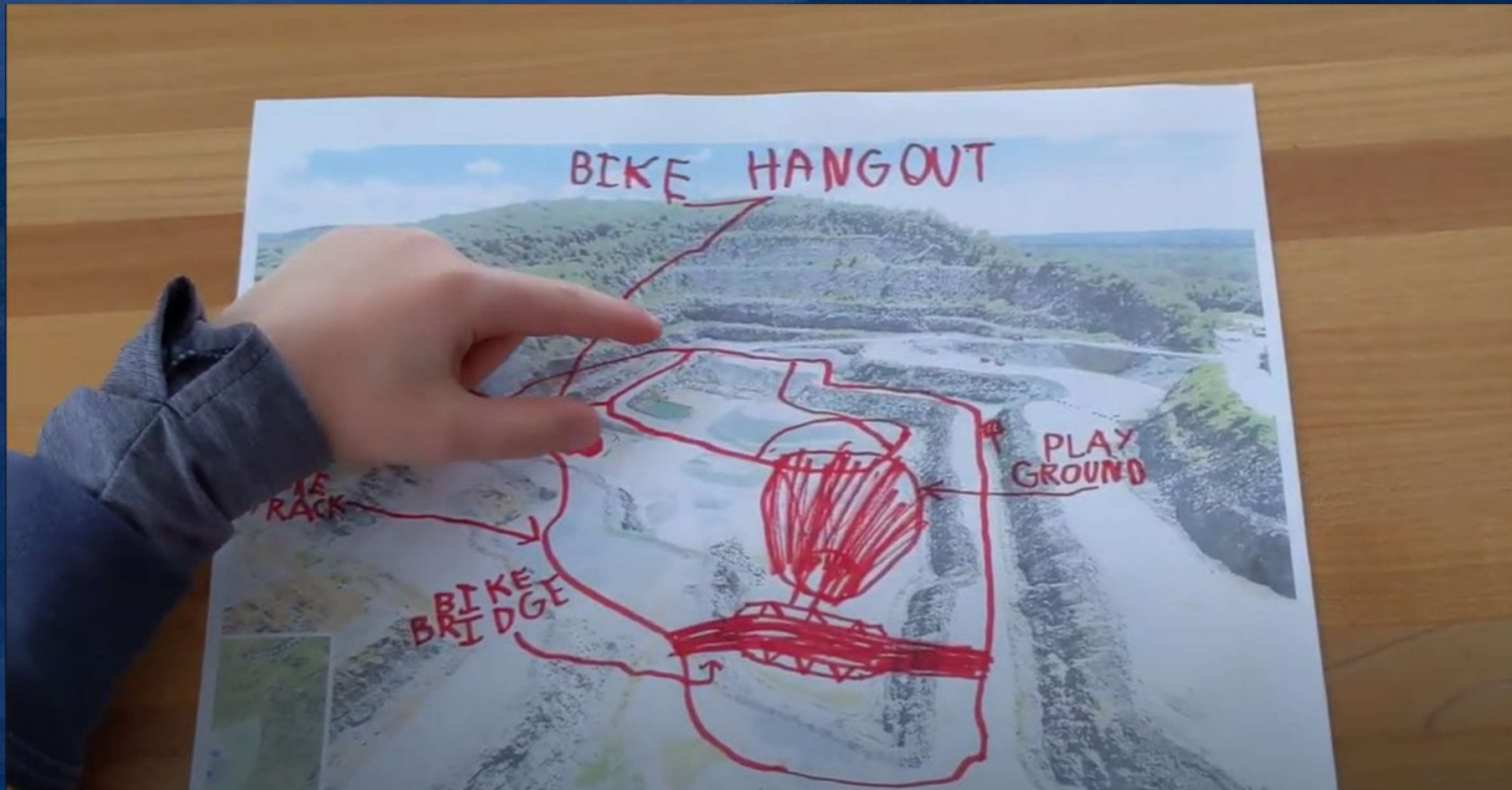
MERCER COUNTY PARK COMMISSION:

Anthony Cucchi, Superintendent of Parks

Phone: 609-303-0710

Email: ACUCCHI@MERCERCOUNTY.ORG

Concept Ideas



Moores Station Quarry Rehabilitation
&
Park Development

General Discussion

Please submit questions and statements via:

- Chat function, or
- “Raise your Hand” function (found at the bottom of the participant box) – the host will prompt you to unmute your microphone when it is your turn. Please keep questions or statements to 3 minutes or less.

Site Concept A – Passive Recreation



Site Concept B – Water Centric



Site Concept C – Adventure Sports



Thank you!

- County website:

<https://www.mercercountyparks.org/#!/about/moores-station-quarry-park-plan>

- Online Feedback Survey:

<https://www.surveymonkey.com/r/MSQ-FEEDBACK>

- Next Public Meeting:

Public Meeting #3	Draft Plan Presentation	Tuesday, May 18, 2021
----------------------	----------------------------	--------------------------

SIMONE COLLINS LANDSCAPE ARCHITECTURE:

Phone: 610-239-7601

Peter Simone, Project Principal

Email: PSIMONE@SIMONECOLLINS.COM

Sarah Leeper, Project Manager

Email: SLEEPER@SIMONECOLLINS.COM

Melissa Barley, Staff Landscape Architect

Email: MBARLEY@SIMONCOLLINS.COM

MERCER COUNTY PARK COMMISSION:

Anthony Cucchi, Superintendent of Parks

Phone: 609-303-0710

Email: ACUCCHI@MERCERCOUNTY.ORG