

# PUBLIC INFORMATION CENTER

Wednesday, January 12, 2022



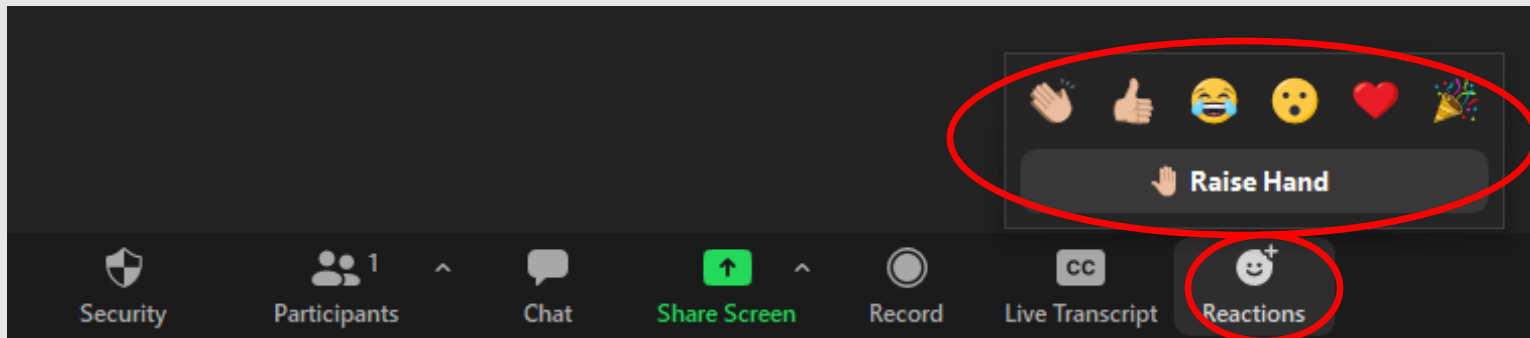
Princeton Avenue (US206/CR 583) and Brunswick  
Circle Extension (CR 645/US 1B) Roundabout Project



# MEETING INFORMATION

## How to ask a Question or Comment?

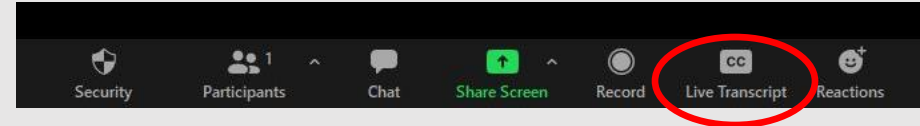
Raise Your Hand in the Zoom Call Press **REACTIONS** and **RAISE HAND** or press \*9 on phone



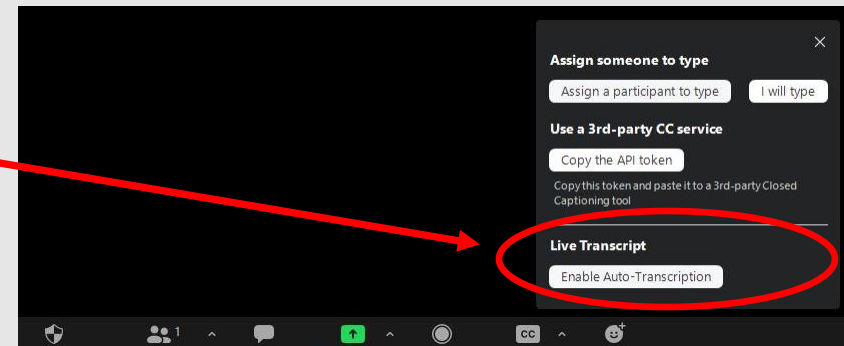
# ZOOM INSTRUCTIONS

- Closed Captioning

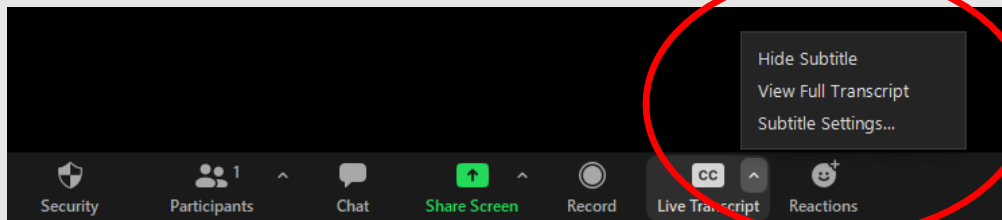
- Select **LIVE TRANSCRIPT**



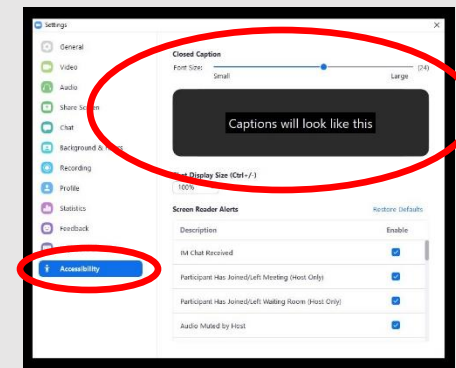
- Select **ENABLE LIVE TRANSCRIPT**



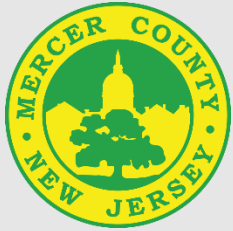
- View or Change Settings



- Select **ACCESSIBILITY** to change Live Transcript Text Size on Slider Bar



# WELCOME & INTRODUCTIONS



Basit “Sunny” Muzaffar, PE  
Mercer County



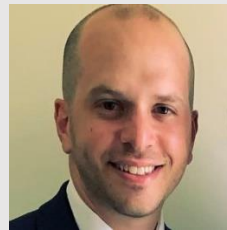
Caitlin Skocypec, PE  
Mercer County



John Coscia  
DVRPC



Dan Hutton, AICP  
Urban Engineers



Justin DiBiase, PE, PTOE  
Urban Engineers



Adam Brown, PE  
Urban Engineers

# AGENDA

---

- Project Background
- Proposed Improvements
  - Roundabout
  - Pedestrian
  - Lighting
  - Drainage
  - Landscaping/Hardscaping
  - Staging
- Right-of-Way
- Schedule
- Questions

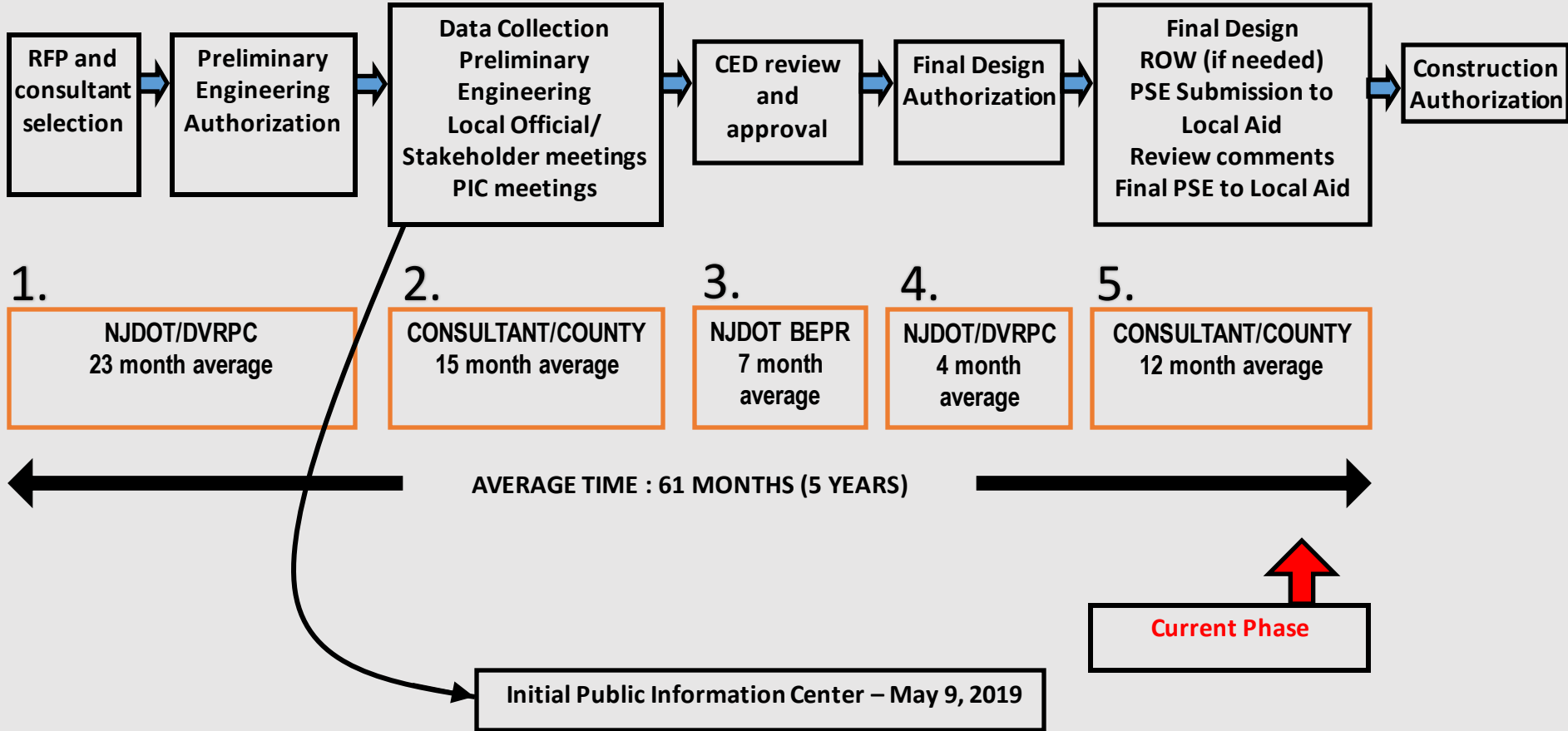


# Project Background

---

- **2008-2009 Princeton Avenue – Spruce Street Study**
  - Public Meetings held w/surveys (4/08, 5/08, 1/09)
  - Recommendations for Road Diet on Princeton Avenue and Roundabout at Princeton Ave/Brunswick Circle Extension
- **2014-2015 DVRPC Highway Safety Improvement Program (HSIP)**
  - Funding for Safety Improvement Project with Roundabouts
  - Mercer County proposed Roundabout design for the intersection of Princeton Ave and Brunswick Circle Extension
  - FHWA and NJDOT performed Highway Safety Manual crash reduction benefit to improvement cost analyses
  - Project was approved for funding and advanced to the Preliminary Engineering Phase
- **May 9<sup>th</sup> 2019 Public Information Center held at Trenton Farmers Market**
  - Preliminary Design discussed
  - Survey taken for public feedback

# FEDERAL PROCESS AND PROJECT TIMELINE



# PURPOSE AND NEED

## Project Purpose

To provide safety and traffic improvements at the intersection of Princeton Avenue (US 206Z/CR 583) and Brunswick Circle Extension (CR 645/US 1B) , with a focus on pedestrian and bicycle safety.

## Project Need

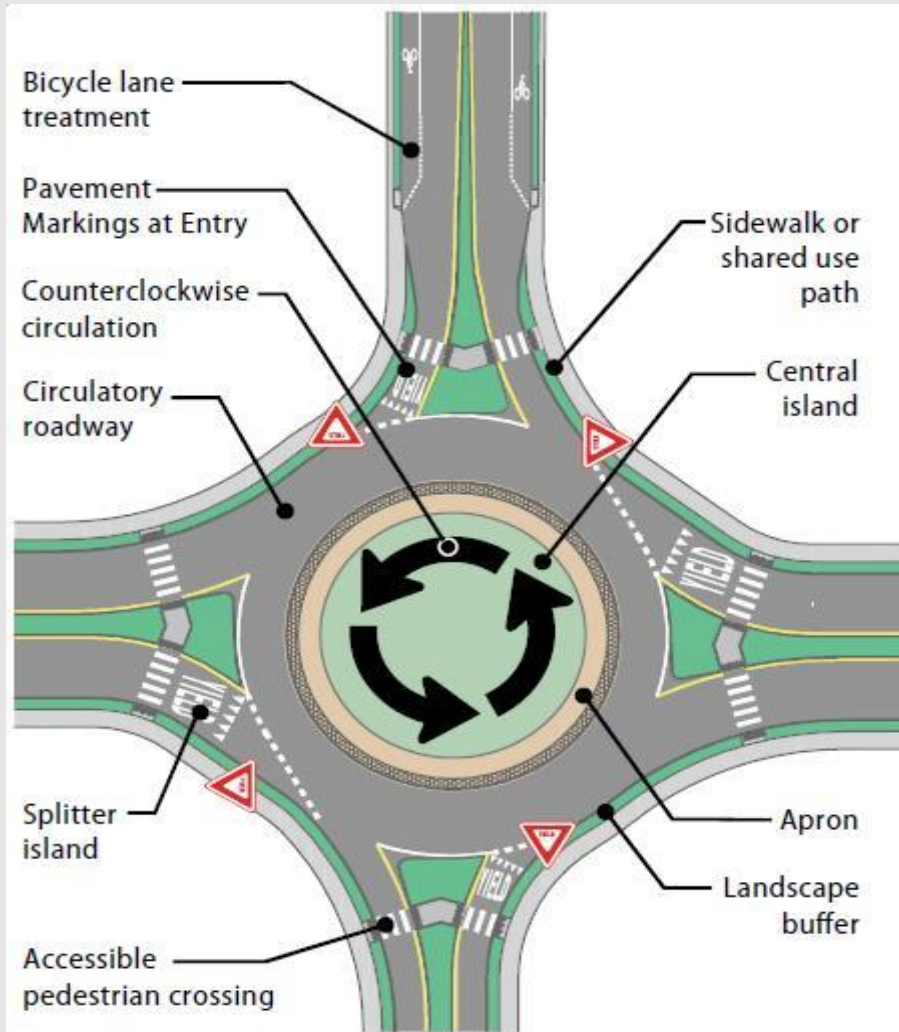
- High frequency of sideswipe and encroachment crashes on Princeton Ave.
- Dangerous NB Princeton Ave. crossing maneuver
- Missing move – SB Princeton Ave. to Brunswick Circle Extension
- Cut-thru traffic and dangerous access points
- Limited pedestrian & bicycle accommodations



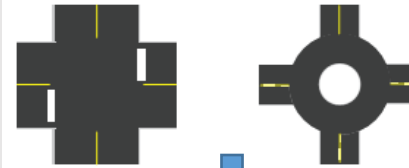


# MODERN ROUNDABOUTS

## DESIGN BASICS



## TWO-WAY STOP-CONTROLLED INTERSECTION TO A ROUNDABOUT



**82%**

Reduction in severe crashes

## SIGNALIZED INTERSECTION TO A ROUNDABOUT

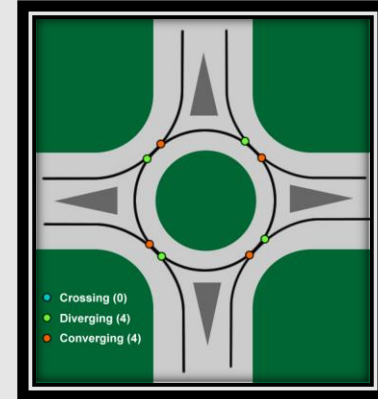


**78%**

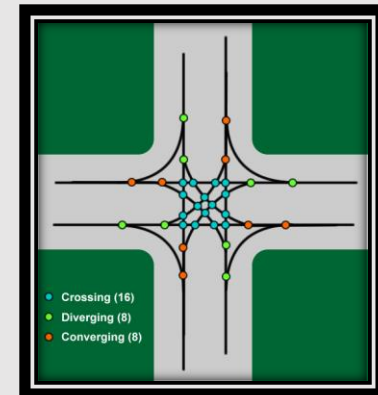
Reduction in severe crashes

1. AASHTO. The Highway Safety Manual, American Association of State Highway Transportation Professionals, Washington, D.C., (2010).

## CONFLICT POINTS



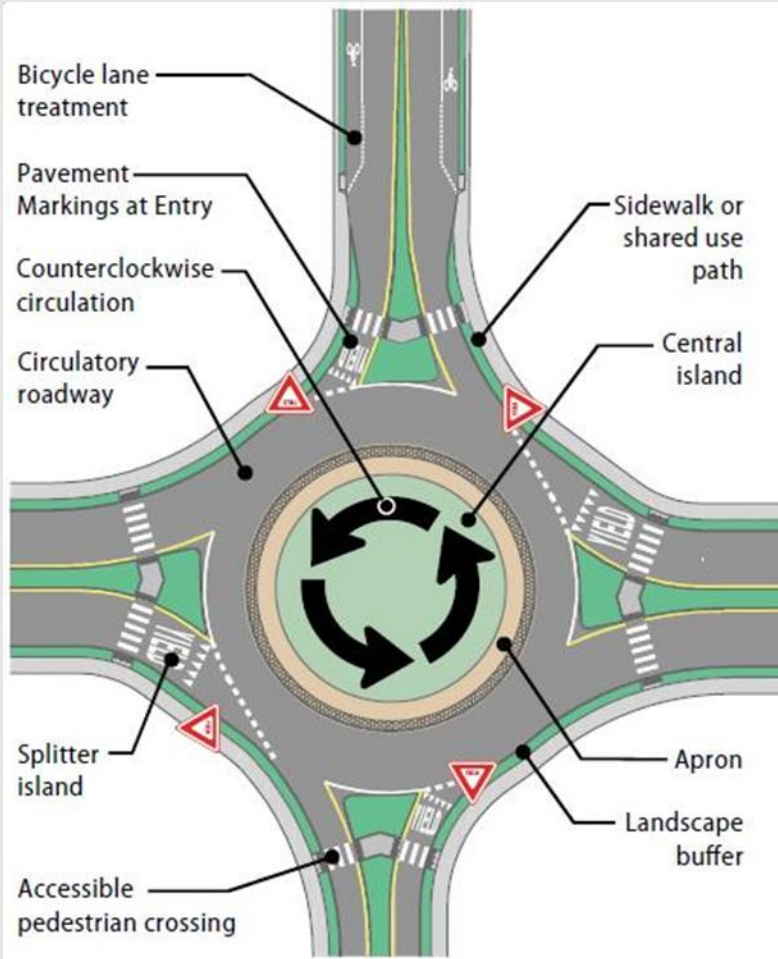
Modern Roundabout



Traditional Intersection

# Modern Roundabout Features

## Are Modern Roundabouts Different than Traffic Circles?



- Yield on Entry
- Deflection on Entry
- Splitter islands on approaches
- Slow circulating speeds
- Central Island with truck apron
- Signing and pavement markings
- No Parking or Driveways
- Pedestrian Accommodations
- Landscaping

**YES**

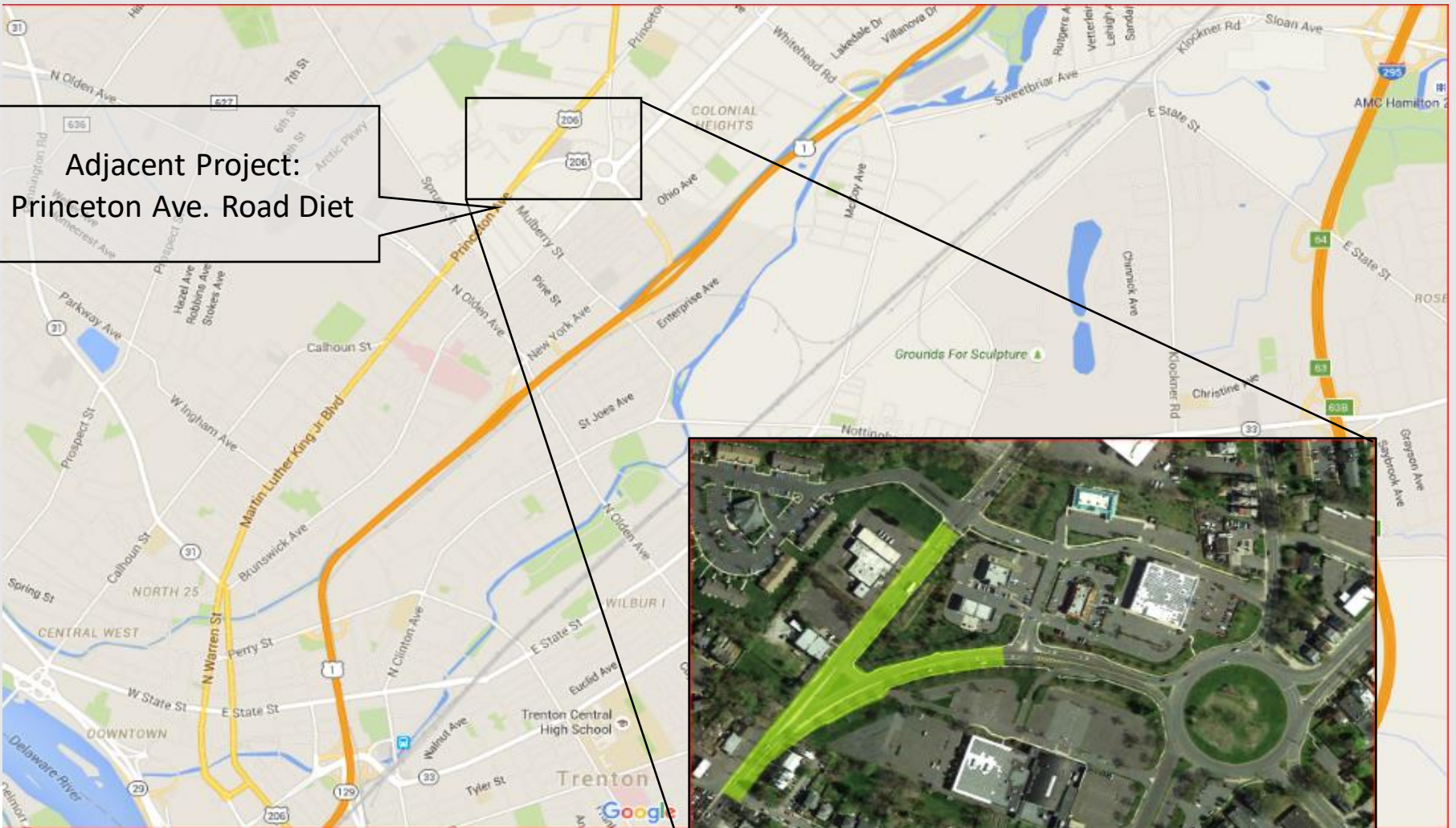
# Modern Roundabout Features

---

- Reduction of crashes by minimizing conflict points
- Reduction of severe crashes (injury & fatality crashes)
- Reduction of speeds on approach roadways & through intersection
- Removing driver confusion from multiple decision points
- Improving intersection congestion and overall delays
- Improving sight lines and sight distances



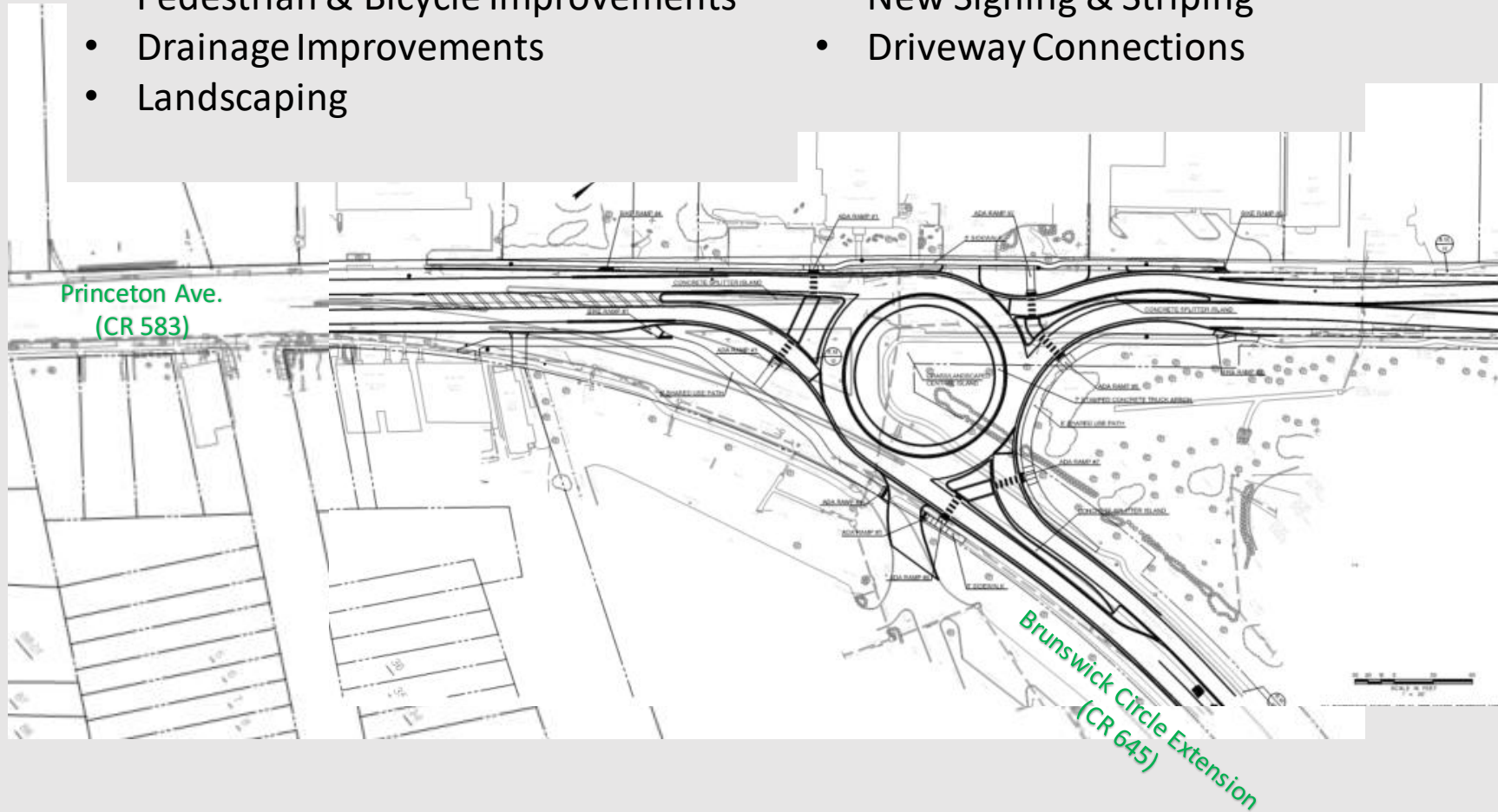
# PROJECT LOCATION



**Princeton Avenue (US206/CR 583) and Brunswick Circle Extension (CR 645/US 1B) Roundabout Project**

# PROPOSED IMPROVEMENTS

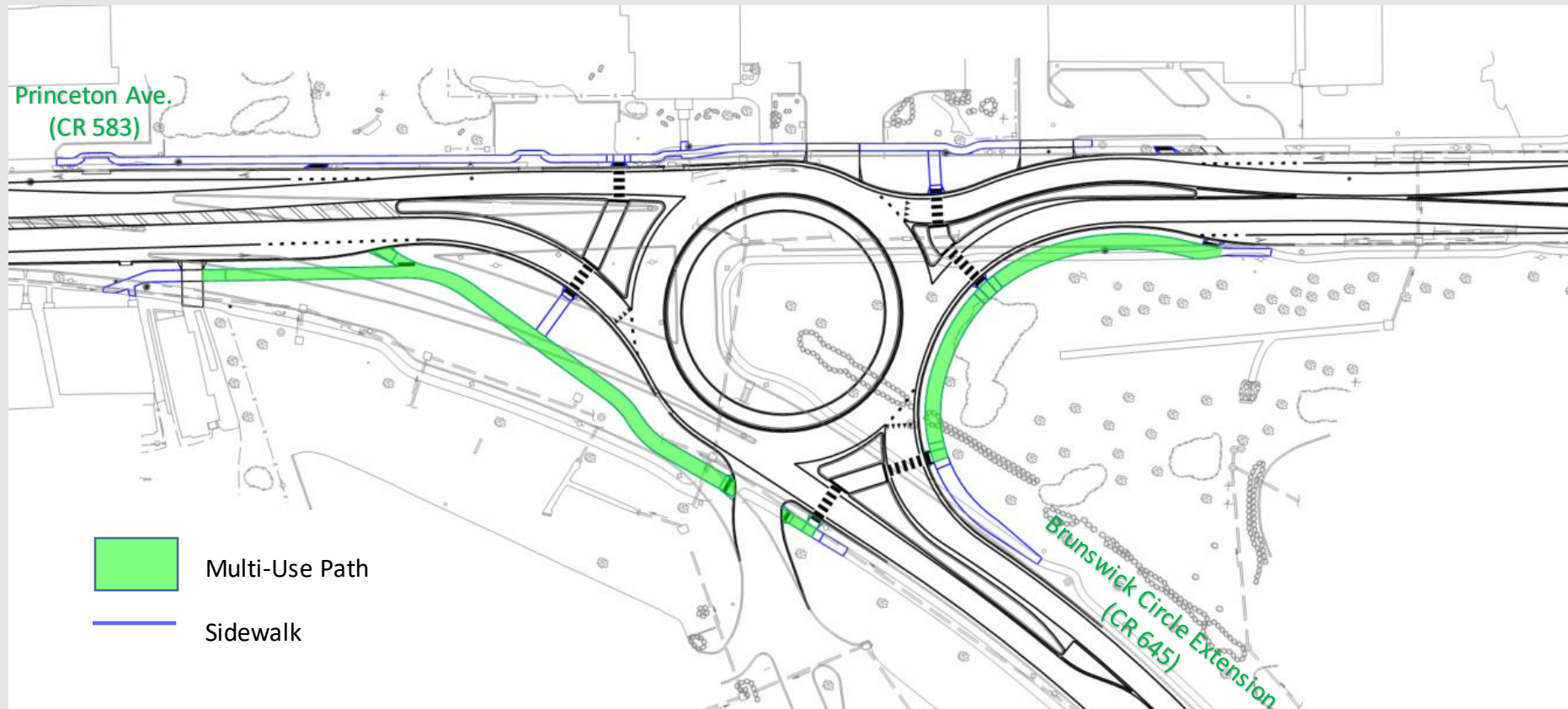
- Roundabout Construction
- Pedestrian & Bicycle Improvements
- Drainage Improvements
- Landscaping
- Lighting
- New Signing & Striping
- Driveway Connections





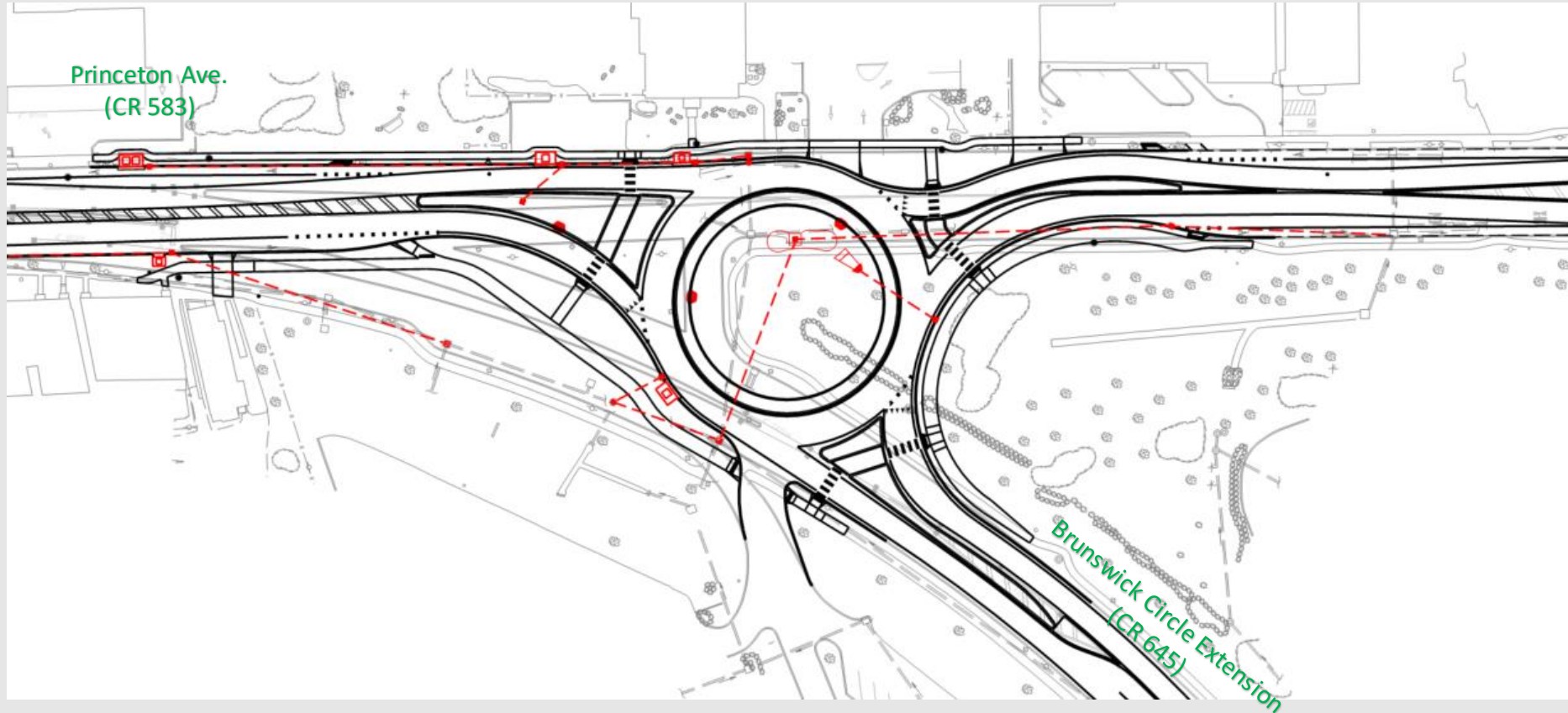
# PROPOSED IMPROVEMENTS

- Pedestrian & Bicycle Improvements



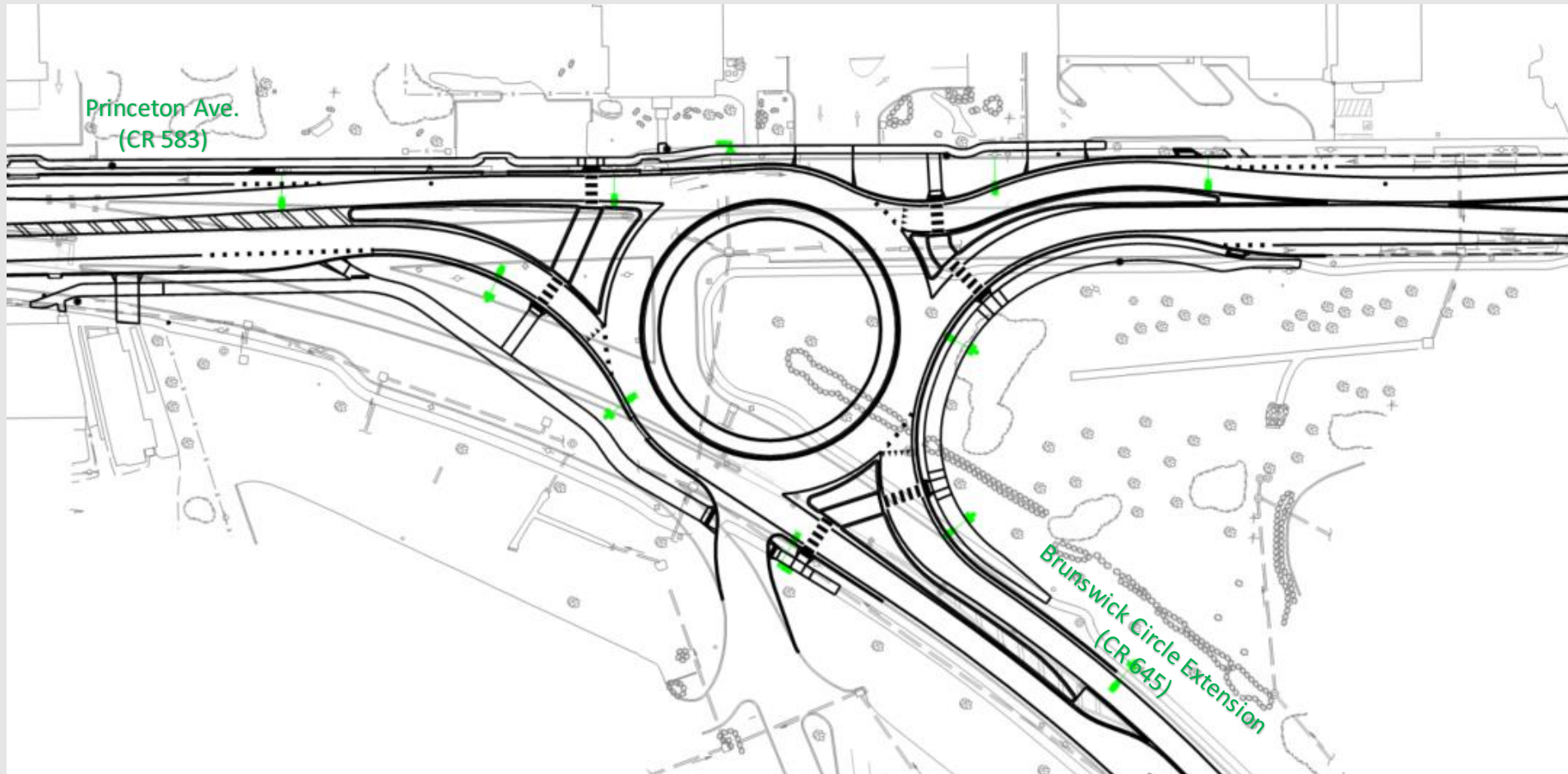
# PROPOSED IMPROVEMENTS

- Drainage Improvements



# PROPOSED IMPROVEMENTS

- Lighting Improvements



Princeton Avenue (US206/CR 583) and Brunswick Circle Extension (CR 645/US 1B) Roundabout Project



# PROPOSED IMPROVEMENTS



Princeton Avenue (US206/CR 583) and Brunswick  
Circle Extension (CR 645/US 1B) Roundabout Project



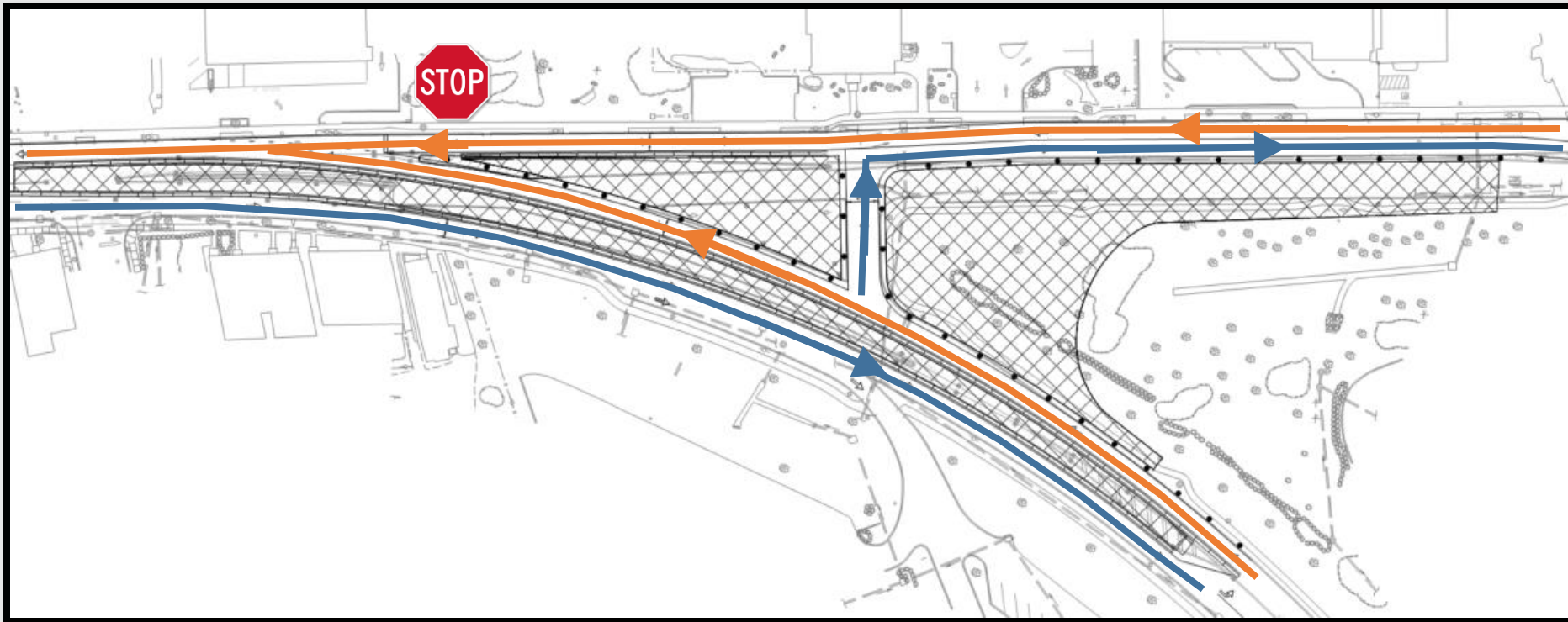
# PROPOSED CONSTRUCTION STAGING

## Stage 1

Estimated Duration: 4 Months

All Moves Available

Eastbound Princeton Ave. will use Circle to continue East



Princeton Avenue (US206/CR 583) and Brunswick  
Circle Extension (CR 645/US 1B) Roundabout Project



# PROPOSED CONSTRUCTION STAGING



Princeton Avenue (US206/CR 583) and Brunswick Circle Extension (CR 645/US 1B) Roundabout Project



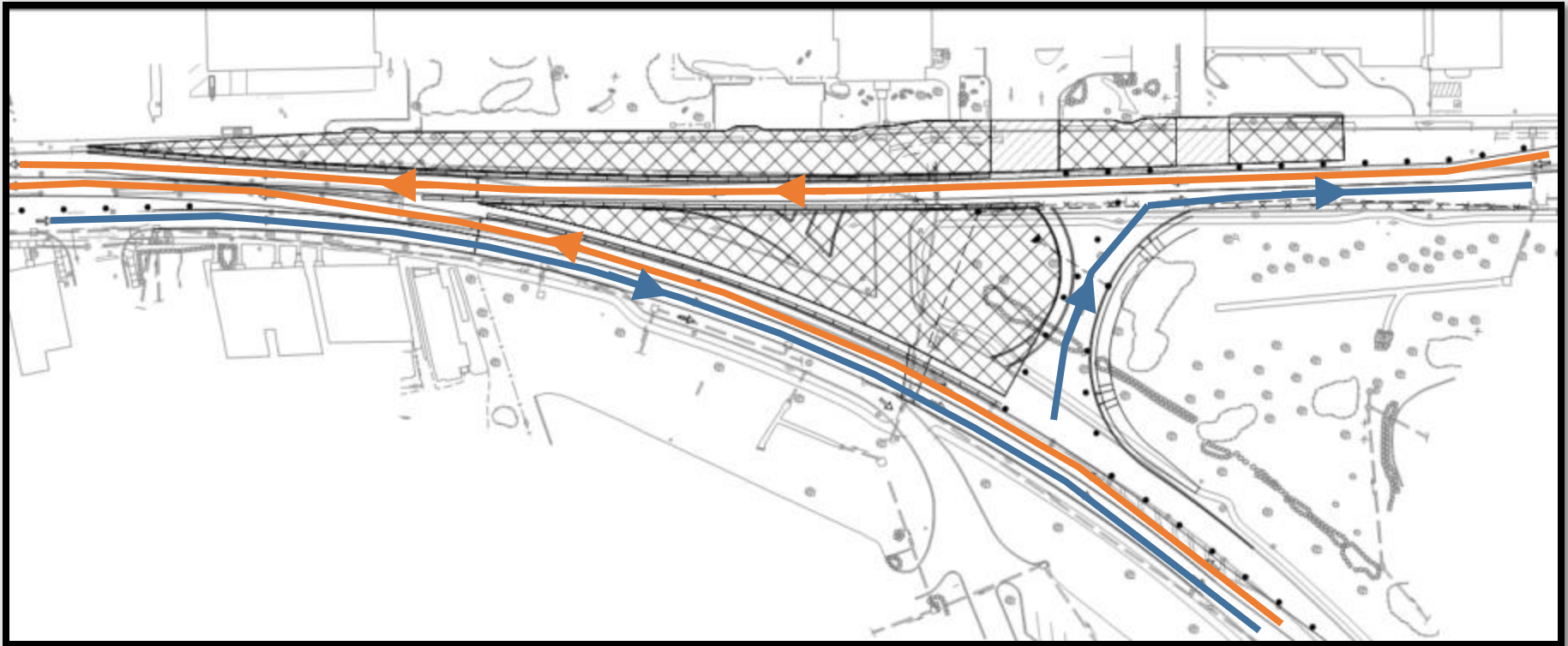
# PROPOSED CONSTRUCTION STAGING

## Stage 2

Estimated Duration: 3 Months

All Moves Available

Eastbound Princeton Ave. will use Circle to continue East



Princeton Avenue (US206/CR 583) and Brunswick  
Circle Extension (CR 645/US 1B) Roundabout Project



# PROPOSED CONSTRUCTION STAGING

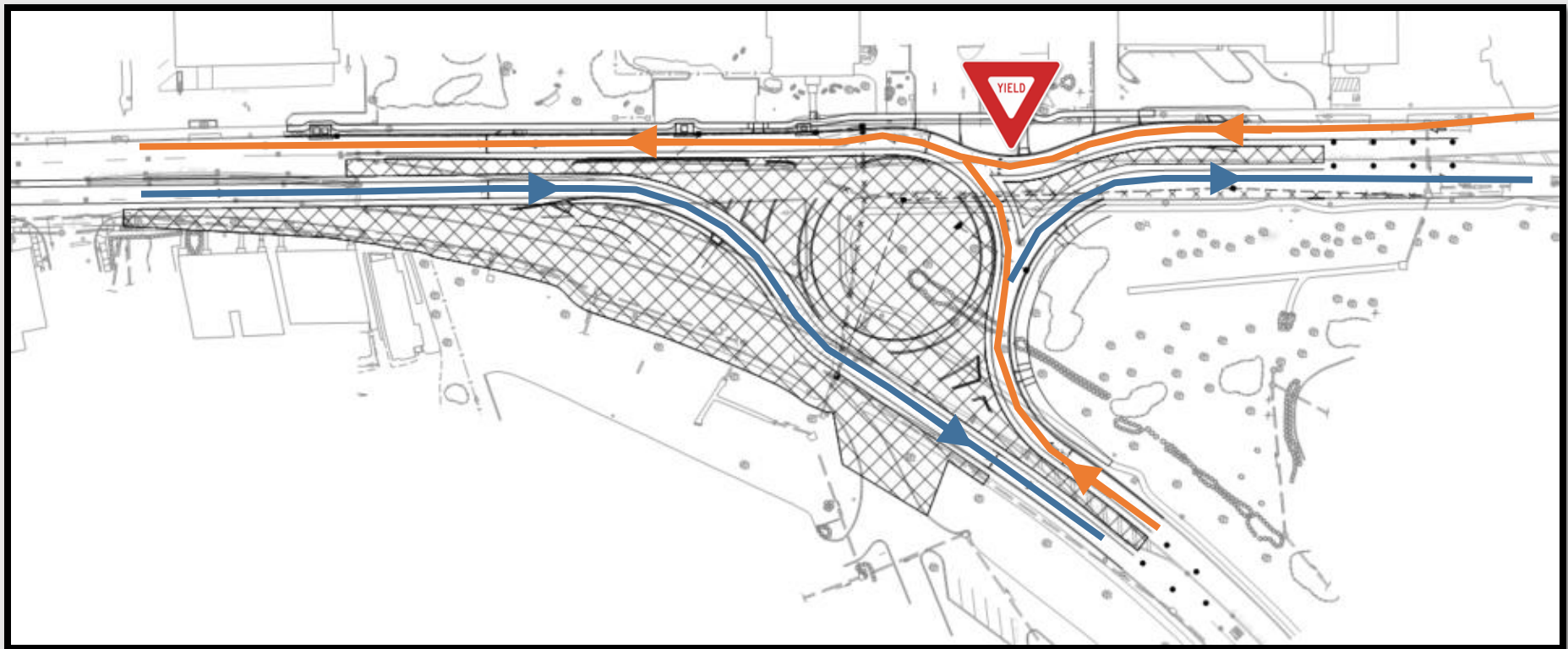
## Stage 3

Estimated Duration: 3 Months

All Moves Available

Eastbound Princeton Ave. will use Circle to continue East

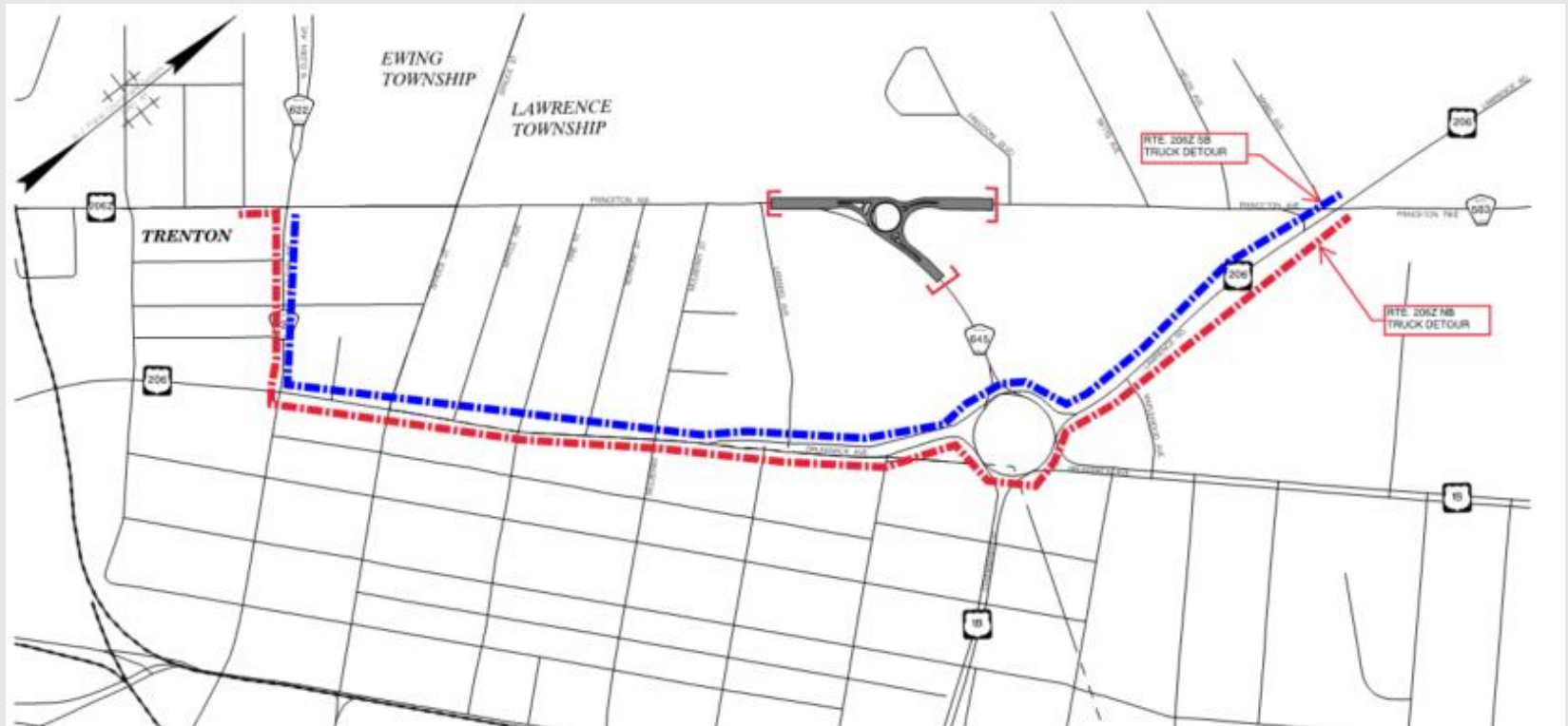
Truck Detour in place



# PROPOSED CONSTRUCTION STAGING

## Truck Detour

Stages 3 & 4 (5.5 Months)



Princeton Avenue (US206/CR 583) and Brunswick  
Circle Extension (CR 645/US 1B) Roundabout Project



# PROPOSED CONSTRUCTION STAGING

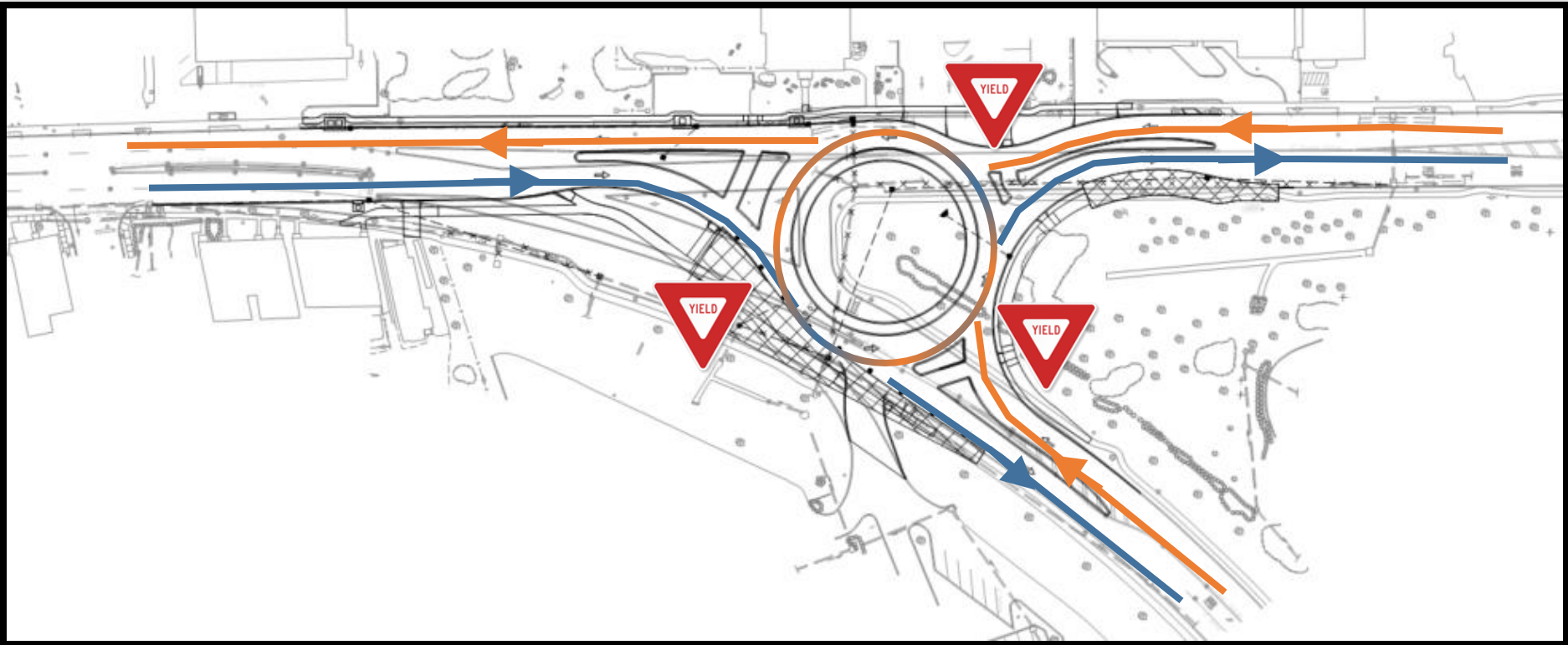
## Stage 4

Estimated Duration: 2.5 Months

All Moves Available

Eastbound Princeton Ave. will use Circle to continue East

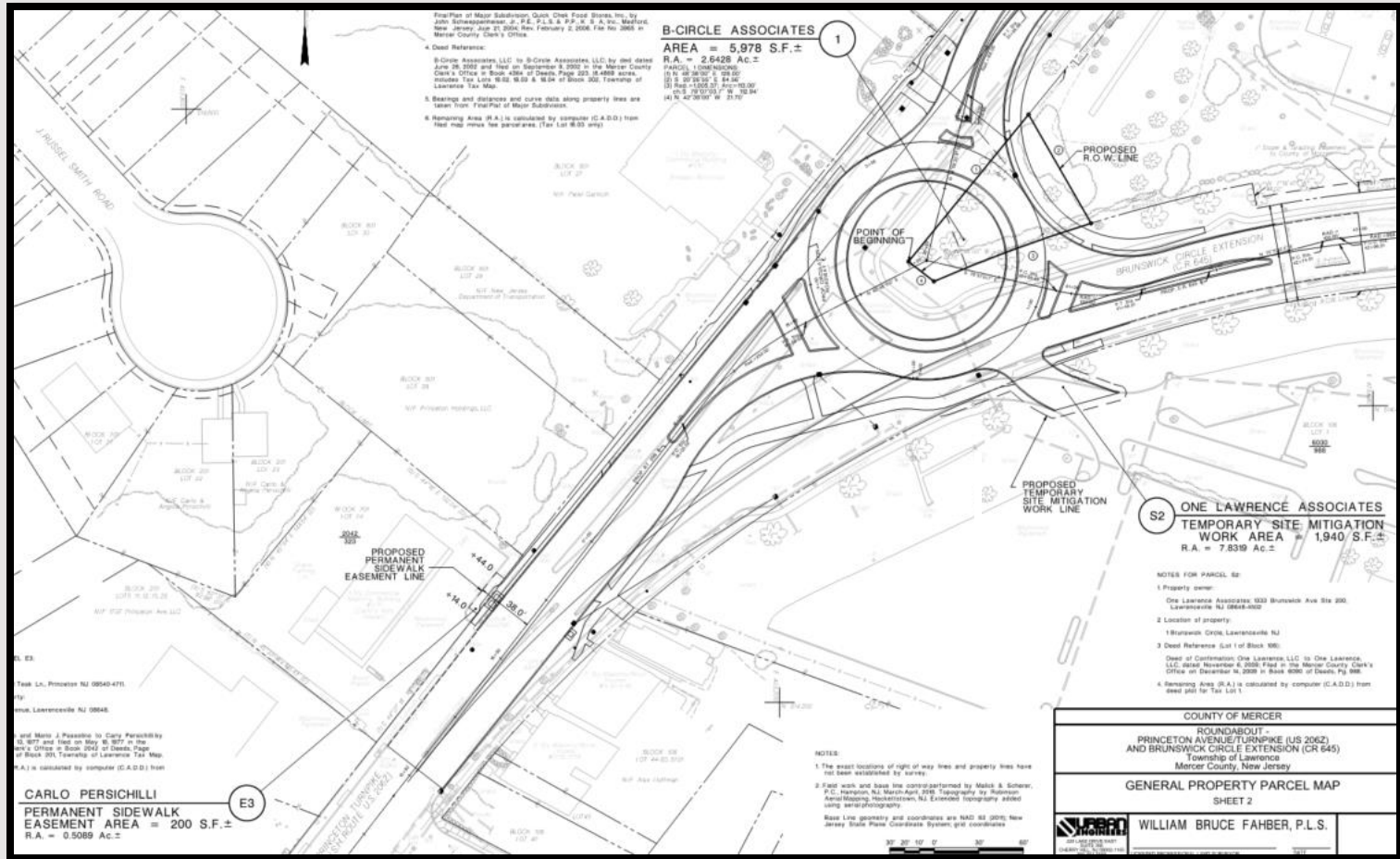
Truck Detour in place





# RIGHT-OF-WAY

- 1 Partial Acquisition
- 1 Sidewalk Easement
- 1 Temporary Site Mitigation



Princeton Avenue (US206/CR 583) and Brunswick Circle Extension (CR 645/US 1B) Roundabout Project



# SCHEDULE

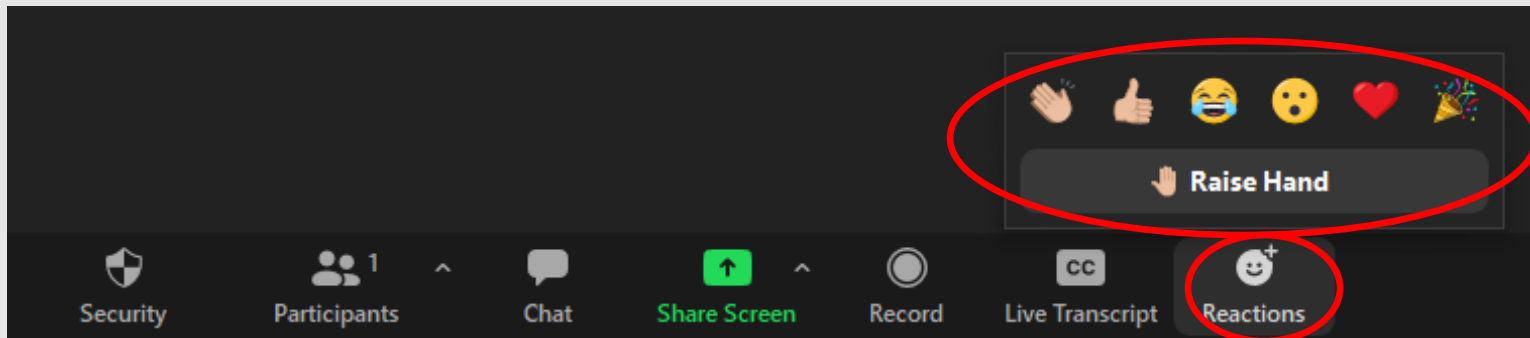
---

- ROW documents submitted to NJDOT ROW for review (Ongoing)
- Ongoing Tasks (Present – 2022)
  - Preliminary Plans, Specifications & Estimate (PS&E) to NJDOT Local Aid
  - County ROW Acquisition Process
  - Final PS&E Submission to Local Aid
  - Construction Authorization (2022)
- Construction (Spring 2023, 9-12 months)

# MEETING INFORMATION

## How to ask a Question or Comment?

Raise Your Hand in the Zoom Call Press **REACTIONS** and **RAISE HAND** or press \*9 on phone



# PUBLIC INFORMATION CENTER

Wednesday, January 12, 2022

## QUESTIONS?

**To Leave a Comment, email**

[cskocypec@mercercounty.org](mailto:cskocypec@mercercounty.org)